

Inhibin beta B / INHBB Antibody, Rabbit PAb, Antigen Affinity Purified



Sino Biological
Biological Solution Specialist

Catalog Number: 101383-T42

GENERAL INFORMATION

Immunogen:	A synthetic peptide corresponding to the N-terminus of the Human Inhibin beta B / INHBB
Preparation	Produced in rabbits immunized with a synthetic peptide corresponding to the N-terminus of the Human Inhibin beta B / INHBB, and purified by antigen affinity chromatography.
Ig Type:	Rabbit IgG
Specificity:	Human, Mouse, Rat
Formulation:	0.2 µm filtered solution in PBS
Storage:	This antibody can be stored at 2°C-8°C for one month without detectable loss of activity. Antibody products are stable for twelve months from date of receipt when stored at -20°C to -80°C. Preservative-Free. Sodium azide is recommended to avoid contamination (final concentration 0.05%-0.1%). It is toxic to cells and should be disposed of properly. Avoid repeated freeze-thaw cycles.

APPLICATIONS

Applications:	WB, IHC-P, ICC/IF, IF
----------------------	-----------------------

RECOMMENDED CONCENTRATION

IHC-P	IHC-P: 1:2500-1:10000
ICC/IF	ICC/IF: 1:1500-1:50000
Western Blot	WB: 1:500-1:1000

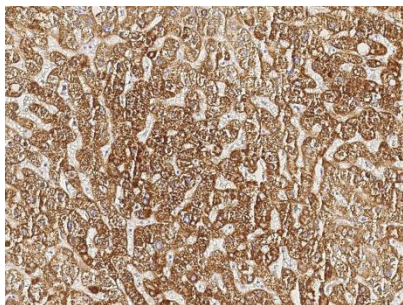
Please Note: Optimal concentrations/dilutions should be determined by the end user.

Inhibin beta B / INHBB Antibody, Rabbit PAb, Antigen Affinity Purified

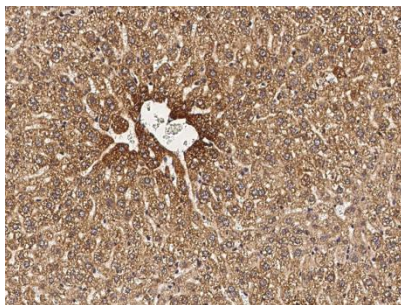


Sino Biological
Biological Solution Specialist

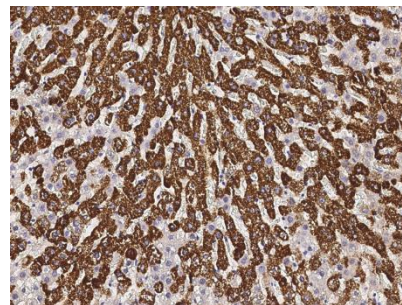
Catalog Number: 101383-T42



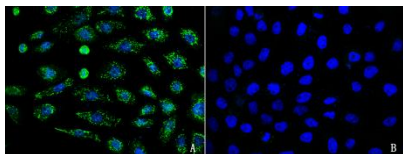
Immunohistochemical staining INHBB in human liver with rabbit polyclonal antibody (1:5000, formalin-fixed paraffin embedded sections).



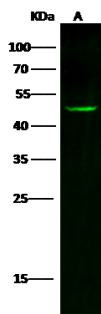
Immunohistochemical staining INHBB in mouse liver with rabbit polyclonal antibody (1 µg/mL, formalin-fixed paraffin embedded sections).



Immunohistochemical staining INHBB in rat liver with rabbit polyclonal antibody (1 µg/mL, formalin-fixed paraffin embedded sections).



Immunofluorescence staining of INHBB in A431 cells. Cells were fixed with 4% PFA, blocked with 10% serum. Then incubated with rabbit anti-human INHBB polyclonal antibody (1:5000) (Figure A). incubated with rabbit anti-human INHBB polyclonal antibody and antigen (Figure B) at 4°C overnight. Then cells were stained with the Alexa Fluor®488-conjugated Goat Anti-rabbit IgG secondary antibody (green) and counterstained with DAPI (blue). Positive staining was localized to cytoplasm.



Anti-INHBB rabbit polyclonal antibody at 1:500 dilution

Lane A: A431 Whole Cell Lysate

Lysates/proteins at 30 µg per lane.

Secondary

Goat Anti- Rabbit IgG H&L (Dylight 800) at 1/10000 dilution.

Developed using the Odyssey technique.

Performed under reducing conditions.

Predicted band size: 45 kDa

Observed band size: 47 kDa