

# CD31 / PECAM1 Antibody (APC), Mouse MAb



Sino Biological  
Biological Solution Specialist

Catalog Number: 10148-MM14-A

## GENERAL INFORMATION

<b>Immunogen:</b>	Recombinant Human CD31 / PECAM-1 protein (Catalog#10148-H08H)
<b>Reagents:</b>	APC-conjugated Mouse monoclonal antibody
<b>Preparation</b>	This antibody was produced from a hybridoma resulting from the fusion of a mouse myeloma with B cells obtained from a mouse immunized with purified, recombinant Human CD31 / PECAM-1 (rh CD31 / PECAM-1; Catalog#10148-H08H; EAW94208.1; Met1-Lys601) and conjugated with APC under optimum conditions, the unreacted APC was removed.
<b>Ig Type:</b>	Mouse IgG1
<b>Clone ID:</b>	14
<b>Specificity:</b>	Human CD31 / PECAM-1
<b>Concentration:</b>	5 µl/Test, 0.1 mg/ml
<b>Formulation:</b>	Aqueous solution containing 0.5% BSA and 0.09% sodium azide
<b>Storage:</b>	This antibody is stable for 12 months from date of receipt when stored at 2°C-8°C. Protected from prolonged exposure to light. Do not freeze! Sodium azide is toxic to cells and should be disposed of properly. Flush with large volumes of water during disposal.

## APPLICATIONS

<b>Applications:</b>	FCM
----------------------	-----

## RECOMMENDED CONCENTRATION

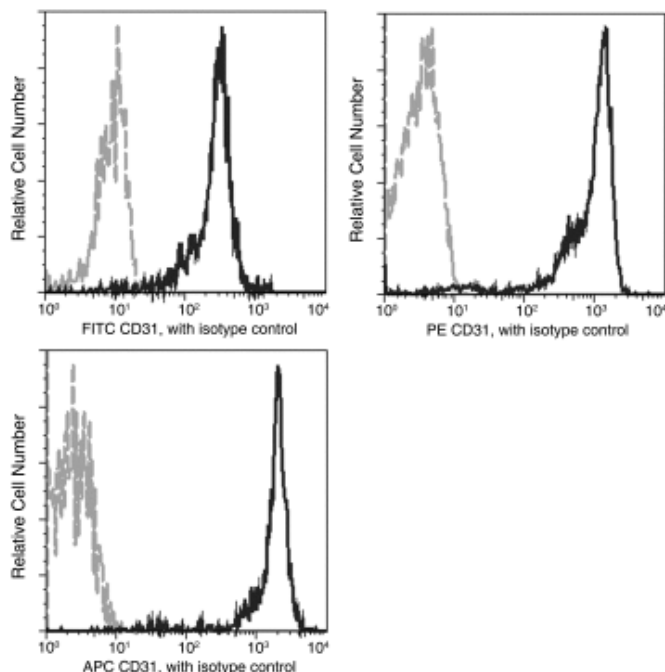
***Please Note: Optimal concentrations/dilutions should be determined by the end user.***

# CD31 / PECAM1 Antibody (APC), Mouse MAb



Sino Biological  
Biological Solution Specialist

Catalog Number: 10148-MM14-A



Flow cytometric analysis of anti-human CD31 on human whole blood monocytes. The fluorescence histograms were derived from events with the forward and side light-scatter characteristics of viable monocytes.

Flow cytometry was performed on a BD FACSCalibur flow cytometry system.

Please refer to [www.sinobiological.com/Flow-Cytometry-FACS-Protocols-a-750.html](http://www.sinobiological.com/Flow-Cytometry-FACS-Protocols-a-750.html) for technical protocols.