

# Endoglin / CD105 Antibody (PE), Mouse MAb



Sino Biological  
Biological Solution Specialist

Catalog Number: 10149-MM13-P

## GENERAL INFORMATION

|                       |  |
|-----------------------|--|
| <b>Immunogen:</b>     | Recombinant Human Endoglin / CD105 protein (Catalog#10149-H08H)  |
| <b>Reagents:</b>      | PE-conjugated Mouse monoclonal antibody  |
| <b>Preparation</b>    | This antibody was produced from a hybridoma resulting from the fusion of a mouse myeloma with B cells obtained from a mouse immunized with purified, recombinant Human Endoglin / CD105 (rh Endoglin / CD105 ; Catalog#10149-H08H; NP_001108225.1; Met1-Gly586) and conjugated with PE under optimum conditions, the unreacted PE was removed. |
| <b>Ig Type:</b>       | Mouse IgG2b  |
| <b>Clone ID:</b>      | 13   |
| <b>Specificity:</b>   | Human Endoglin / CD105   |
| <b>Concentration:</b> | 10 µl/Test, 0.1 mg/ml  |
| <b>Formulation:</b>   | Aqueous solution containing 0.5% BSA and 0.09% sodium azide  |
| <b>Storage:</b>       | This antibody is stable for 12 months from date of receipt when stored at 2°C-8°C. Protected from prolonged exposure to light. Do not freeze!<br>Sodium azide is toxic to cells and should be disposed of properly. Flush with large volumes of water during disposal.   |

## APPLICATIONS

|                      |     |
|----------------------|-----|
| <b>Applications:</b> | FCM |
|----------------------|-----|

## RECOMMENDED CONCENTRATION

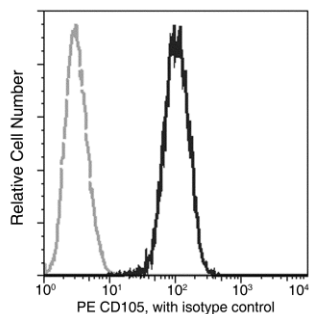
***Please Note: Optimal concentrations/dilutions should be determined by the end user.***

# Endoglin / CD105 Antibody (PE), Mouse MAbs



Sino Biological  
Biological Solution Specialist

Catalog Number: 10149-MM13-P



Flow cytometric analysis of Human CD105 expression in HeLa cells.

Flow cytometry was performed on a BD FACSCalibur flow cytometry system. Please refer to [www.sinobiological.com/Flow-Cytometry-FACS-Protocols-a-750.html](http://www.sinobiological.com/Flow-Cytometry-FACS-Protocols-a-750.html) for technical protocols.