

CD25 / IL-2RA Antibody (APC), Rabbit MAb



Sino Biological
Biological Solution Specialist

Catalog Number: 10165-R216-A

EliteRmab® is a registered trademark of Sino Biological Inc.

GENERAL INFORMATION	
Immunogen:	Recombinant Human CD25 / IL-2RA protein (Catalog#10165-H08H)
Reagents:	APC-conjugated Rabbit monoclonal antibody
Preparation	This antibody was obtained from a rabbit immunized with purified, recombinant Human CD25 / IL-2RA (rh CD25 / IL-2RA; Catalog#10165-H08H; NP_000408.1; Met 1-Cys213) and conjugated with APC under optimum conditions, the unreacted APC was removed.
Ig Type:	Rabbit IgG
Clone ID:	216
Specificity:	Human CD25 / IL-2RA
Concentration:	5 µl/Test, 0.1 mg/ml
Formulation:	Aqueous solution containing 0.5% BSA and 0.1% sodium azide
Storage:	This antibody can be stored at 2°C-8°C for twelve months without detectable loss of activity. Protected from prolonged exposure to light. Do not freeze ! Sodium azide is toxic to cells and should be disposed of properly. Flush with large volumes of water during disposal.
Alternative Names:	CD25, IDDM10, IL-2RA, IL2R, p55, TCGFR
APPLICATIONS	
Applications:	FCM

Please Note: Optimal concentrations/dilutions should be determined by the end user.

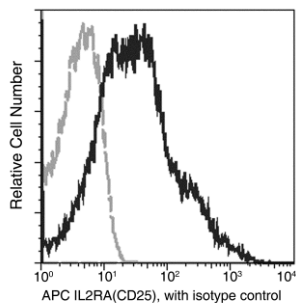
CD25 / IL-2RA Antibody (APC), Rabbit MAb

Catalog Number: 10165-R216-A



Sino Biological
Biological Solution Specialist

EliteRmab® is a registered trademark of Sino Biological Inc.



Flow cytometric analysis of IL2RA(CD25) expression on stimulated human peripheral blood lymphocytes. Human peripheral blood mononuclear cells were stimulated for 3 days with Phytohemagglutinin, then stained with APC-conjugated anti-Human IL2RA(CD25). The fluorescence histograms were derived from events with the forward and side light-scatter characteristics of viable lymphocytes.

Flow cytometry was performed on a BD FACSCalibur flow cytometry system. Please refer to www.sinobiological.com/Flow-Cytometry-FACS-Protocols-a-750.html for technical protocols.