

# IL2RA/IL-2RA/CD25 Antibody (PerCP), Rabbit MAb



Sino Biological  
Biological Solution Specialist

Catalog Number: 10165-R216-C

EliteRmab® is a registered trademark of Sino Biological Inc.

## GENERAL INFORMATION

<b>Immunogen:</b>	Recombinant Human IL2RA/IL-2RA/CD25 Protein (Catalog#10165-H08H)
<b>Reagents:</b>	PerCP-conjugated Rabbit monoclonal antibody
<b>Preparation</b>	This antibody was obtained from a rabbit immunized with purified, recombinant Human IL2RA/IL-2RA/CD25 (rh IL2RA/IL-2RA/CD25; Catalog#10165-H08H; NP_000408.1; Met1-Cys213) and conjugated with PerCP under optimum conditions, the unreacted PerCP was removed.
<b>Ig Type:</b>	Rabbit IgG
<b>Clone ID:</b>	216
<b>Specificity:</b>	Human IL2RA/IL-2RA/CD25
<b>Concentration:</b>	5 µl/Test, 0.1 mg/ml
<b>Formulation:</b>	Aqueous solution containing 0.5% BSA and 0.09% sodium azide
<b>Storage:</b>	This antibody is stable for 12 months from date of receipt when stored at 2°C-8°C. Protected from prolonged exposure to light. Do not freeze! Sodium azide is toxic to cells and should be disposed of properly. Flush with large volumes of water during disposal.

## APPLICATIONS

<b>Applications:</b>	FCM
----------------------	-----

## RECOMMENDED CONCENTRATION

*Please Note: Optimal concentrations/dilutions should be determined by the end user.*

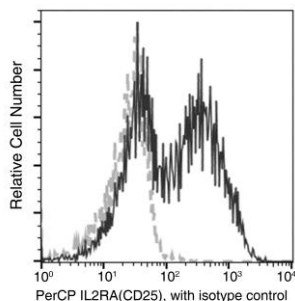
# IL2RA/IL-2RA/CD25 Antibody (PerCP), Rabbit MAb

Catalog Number: 10165-R216-C



Sino Biological  
Biological Solution Specialist

EliteRmab® is a registered trademark of Sino Biological Inc.



Flow cytometric analysis of IL2RA(CD25) expression on stimulated human peripheral blood lymphocytes. Human peripheral blood mononuclear cells were stimulated for 3 days with Phytohemagglutinin, then stained with PerCP-conjugated anti-Human IL2RA(CD25). The fluorescence histograms were derived from events with the forward and side light-scatter characteristics of viable lymphocytes.

Flow cytometry was performed on a BD FACSCalibur flow cytometry system. Please refer to [www.sinobiological.com/Flow-Cytometry-FACS-Protocols-a-750.html](http://www.sinobiological.com/Flow-Cytometry-FACS-Protocols-a-750.html) for technical protocols.