

CD25 / IL-2RA Antibody (FITC), Rabbit MAb



Sino Biological
Biological Solution Specialist

Catalog Number: 10165-R216-F

EliteRmab® is a registered trademark of Sino Biological Inc.

GENERAL INFORMATION

Immunogen:	Recombinant Human CD25 / IL-2RA protein (Catalog#10165-H08H)
Reagents:	FITC-conjugated Rabbit monoclonal antibody
Preparation	This antibody was obtained from a rabbit immunized with purified, recombinant Human CD25 / IL-2RA (rh CD25 / IL-2RA; Catalog#10165-H08H; NP_000408.1; Met 1-Cys213) and conjugated with FITC under optimum conditions, the unreacted FITC was removed.
Ig Type:	Rabbit IgG
Clone ID:	216
Specificity:	Human CD25 / IL-2RA
Concentration:	5 µl/Test, 0.1 mg/ml
Formulation:	PBS solution containing 0.5% BSA and 0.03%ProClin300
Storage:	This antibody can be stored at 2°C-8°C for twelve months without detectable loss of activity. Protected from prolonged exposure to light. Do not freeze !
Alternative Names:	IL2RA

APPLICATIONS

Applications:	FCM
----------------------	-----

RECOMMENDED CONCENTRATION

Please Note: Optimal concentrations/dilutions should be determined by the end user.

For Research Use Only. Not for use in diagnostic or therapeutic procedures.

Tel: +86-400-890-9989 (Global), +1-215-583-7898 (USA), +49(0)6196 9678656 (Europe)

Website: <http://www.sinobiological.com>

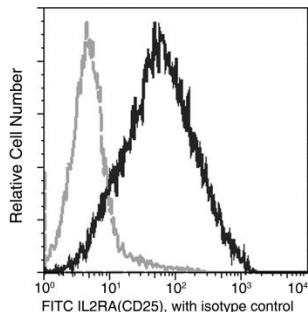
CD25 / IL-2RA Antibody (FITC), Rabbit MAb

Catalog Number: 10165-R216-F



Sino Biological
Biological Solution Specialist

EliteRmab® is a registered trademark of Sino Biological Inc.



Flow cytometric analysis of IL2RA(CD25) expression on stimulated human peripheral blood lymphocytes. Human peripheral blood mononuclear cells were stimulated for 3 days with Phytohemagglutinin, then stained with FITC-conjugated anti-Human IL2RA(CD25). The fluorescence histograms were derived from events with the forward and side light-scatter characteristics of viable lymphocytes.

Flow cytometry was performed on a BD FACSCalibur flow cytometry system. Please refer to www.sinobiological.com/Flow-Cytometry-FACS-Protocols-a-750.html for technical protocols.

For Research Use Only. Not for use in diagnostic or therapeutic procedures.

Tel: +86-400-890-9989 (Global), +1-215-583-7898 (USA), +49(0)6196 9678656 (Europe)

Website: <http://www.sinobiological.com>