

HIF1AN Antibody, Rabbit PAb, Antigen Affinity Purified



Sino Biological
Biological Solution Specialist

Catalog Number: 101652-T10

GENERAL INFORMATION

Immunogen:	A synthetic peptide corresponding to the C-terminus of the Human HIF1AN
Preparation	Produced in rabbits immunized with a synthetic peptide corresponding to the C-terminus of the Human HIF1AN, and purified by antigen affinity chromatography.
Ig Type:	Rabbit IgG
Specificity:	Human Mouse (Species predicted to react based on 100% sequence homology)
Formulation:	0.2 µm filtered solution in PBS
Storage:	This antibody can be stored at 2°C-8°C for one month without detectable loss of activity. Antibody products are stable for twelve months from date of receipt when stored at -20°C to -80°C. Preservative-Free. Avoid repeated freeze-thaw cycles.
Alternative Names:	FIH1

APPLICATIONS

Applications:	IHC-P, ICC/IF
----------------------	---------------

RECOMMENDED CONCENTRATION

IHC-P	IHC-P: 1:100-1:500
ICC/IF	ICC/IF: 1:300-1:10000

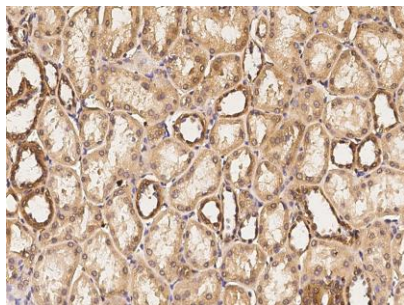
Please Note: Optimal concentrations/dilutions should be determined by the end user.

HIF1AN Antibody, Rabbit PAb, Antigen Affinity Purified

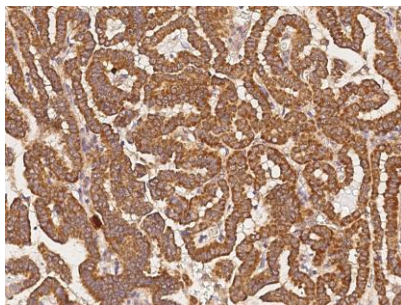
Catalog Number: 101652-T10



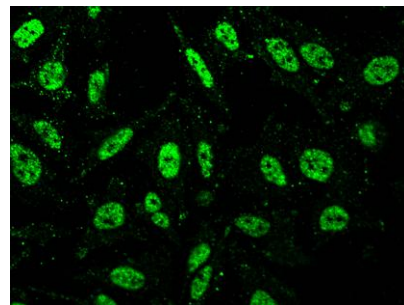
Sino Biological
Biological Solution Specialist



Immunohistochemical staining of human HIF1N in human kidney with rabbit polyclonal antibody (1:300, formalin-fixed paraffin embedded sections).



Immunohistochemical staining of human HIF1N in human thyroid carcinoma with rabbit polyclonal antibody (1:300, formalin-fixed paraffin embedded sections).



Immunofluorescence staining of HIF1N in HeLa cells. Cells were fixed with 4% PFA, blocked with 10% serum, and incubated with rabbit anti-human HIF1N polyclonal antibody (1:1000) at 4°C overnight. Then cells were stained with the Alexa Fluor®488-conjugated Goat Anti-rabbit IgG secondary antibody (green). Positive staining was localized to nucleus.