

PAX2 Antibody, Rabbit PAb, Antigen Affinity Purified



Sino Biological
Biological Solution Specialist

Catalog Number: 101696-T46

GENERAL INFORMATION

Immunogen:	A synthetic peptide corresponding to the center region of the Human PAX2
Preparation	Produced in rabbits immunized with a synthetic peptide corresponding to the center region of the Human PAX2, and purified by antigen affinity chromatography.
Ig Type:	Rabbit IgG
Specificity:	Human , Mouse
	Reacts with Mouse
Formulation:	0.2 µm filtered solution in PBS
Storage:	This antibody can be stored at 2°C-8°C for one month without detectable loss of activity. Antibody products are stable for twelve months from date of receipt when stored at -20°C to -80°C. Preservative-Free. Avoid repeated freeze-thaw cycles.
Alternative Names:	RP11-179B2.1,PAPRS

APPLICATIONS

Applications:	WB,IHC-P,ICC/IF,IP
----------------------	--------------------

RECOMMENDED CONCENTRATION

IHC-P	IHC-P: 1:500-1:2000
ICC/IF	ICC/IF: 1:100-1:500
Western Blot	WB: 1:500-1:2000
Immunoprecipitation	IP:0.5-2µL/mg of lysate

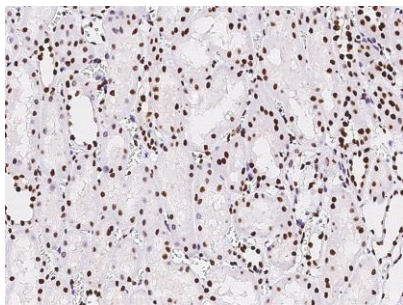
Please Note: Optimal concentrations/dilutions should be determined by the end user.

PAX2 Antibody, Rabbit PAb, Antigen Affinity Purified

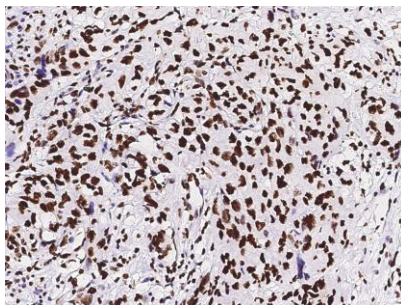


Sino Biological
Biological Solution Specialist

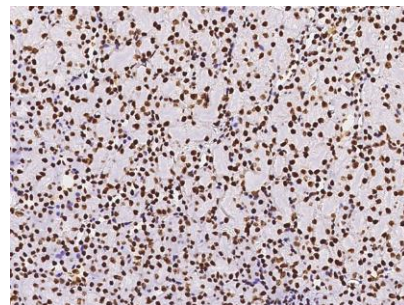
Catalog Number: 101696-T46



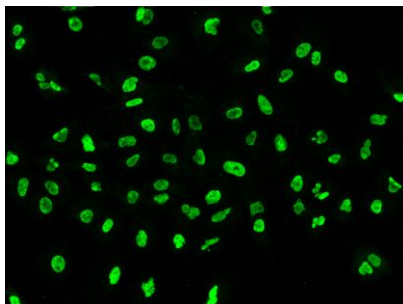
Immunohistochemical staining of human PAX2 in human kidney with rabbit polyclonal antibody at 1:1000 dilution, formalin-fixed paraffin embedded sections.



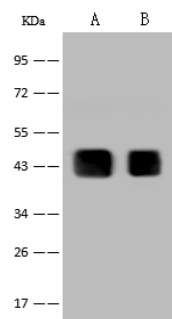
Immunohistochemical staining of human PAX2 in human renal carcinoma with rabbit polyclonal antibody at 1:1000 dilution, formalin-fixed paraffin embedded sections.



Immunohistochemical staining of human PAX2 in mouse kidney with rabbit polyclonal antibody at 1:1000 dilution, formalin-fixed paraffin embedded sections.



Immunofluorescence staining of PAX2 in A549 cells. Cells were fixed with 4% PFA, permeabilized with 0.1% Triton X-100 in PBS, blocked with 10% serum, and incubated with rabbit anti-Human PAX2 polyclonal antibody (dilution ratio 1:200) at 4°C overnight. Then cells were stained with the Alexa Fluor®488-conjugated Goat Anti-rabbit IgG secondary antibody (green). Positive staining was localized to Nucleus.



Anti-PAX2 rabbit polyclonal antibody at 1:500 dilution

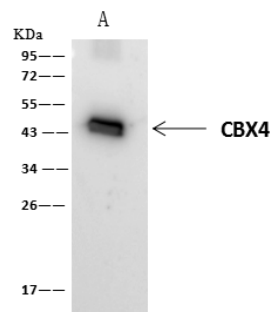
Lane A: K562 Whole Cell Lysate
Lane B: 293T Whole Cell Lysate

Lysates/proteins at 30 µg per lane.

Secondary
Goat Anti-Rabbit IgG (H+L)/HRP at 1/10000 dilution.

Developed using the ECL technique. Performed under reducing conditions.

Predicted band size: 44 kDa
Observed band size: 44 kDa



CBX4 was immunoprecipitated using:
Lane A: 0.5 mg K562 Whole Cell Lysate

4 µL anti-CBX4 rabbit polyclonal antibody and 60 µg of Immunomagnetic beads Protein A/G. Primary antibody:

Anti-CBX4 rabbit polyclonal antibody, at 1:100 dilution

Secondary antibody:
Clean-Blot IP Detection Reagent (HRP) at 1:1000 dilution

Developed using the ECL technique. Performed under reducing conditions.

Predicted band size: 44 kDa
Observed band size: 45 kDa