

CD147 / EMMPRIN / Basigin Antibody, Rabbit MAb



Sino Biological
Biological Solution Specialist

Catalog Number: 10186-R125

EliteRmab® is a registered trademark of Sino Biological Inc.

GENERAL INFORMATION	
Immunogen:	Recombinant Human CD147 protein (Catalog#10186-H08H)
Preparation	This antibody was obtained from a rabbit immunized with purified, recombinant Human CD147 / Basigin (rh CD147; Catalog#10186-H08H; NP_940991.1; Met 1-His 205).
Ig Type:	Rabbit IgG
Clone ID:	125
Specificity:	Human CD147 / Basigin / BSG
Formulation:	0.2 µm filtered solution in PBS
Storage:	This antibody can be stored at 2°C-8°C for one month without detectable loss of activity. Antibody products are stable for twelve months from date of receipt when stored at -20°C to -80°C. Preservative-Free. Sodium azide is recommended to avoid contamination (final concentration 0.05%-0.1%). It is toxic to cells and should be disposed of properly. Avoid repeated freeze-thaw cycles.
APPLICATIONS	
Applications:	WB,ELISA,IHC-Fr,IHC-P,FCM,ICC/IF,IP
RECOMMENDED CONCENTRATION	
IHC-P	IHC-P: 1:2500-1:10000
IHC-Fr	IHC-Fr: 1:500-1:2000
ICC/IF	ICC/IF: 1:50-1:1000
Flow Cytometry	FCM: 1:25-1:100
Western Blot	WB: 1:500-1:2000
Immunoprecipitation	IP: 4-6 µL/mg of lysate
ELISA	ELISA: 1:5000-1:10000 This antibody can be used at 1:5000-1:10000 with the appropriate secondary reagents to detect Human CD147.

Please Note: Optimal concentrations/dilutions should be determined by the end user.

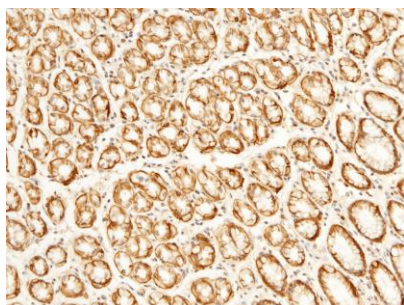
CD147 / EMMPRIN / Basigin Antibody, Rabbit MAb

Catalog Number: 10186-R125

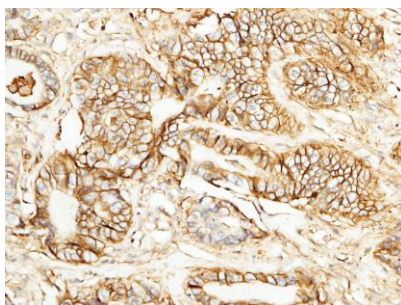


Sino Biological
Biological Solution Specialist

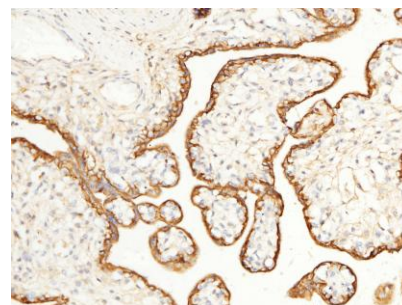
EliteRmab® is a registered trademark of Sino Biological Inc.



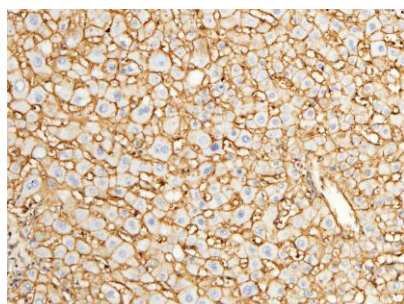
Immunohistochemical staining of human CD147 in human stomach with rabbit monoclonal antibody (1:5000, formalin-fixed paraffin embedded sections). The image showing membrane staining of epithelial cell.



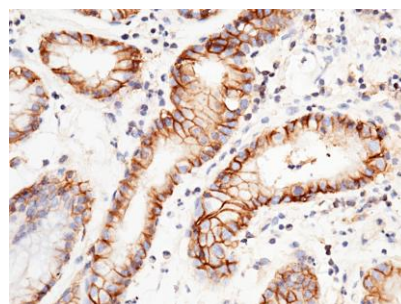
Immunohistochemical staining of human CD147 in human rectal cancer with rabbit monoclonal antibody (1:5000, formalin-fixed paraffin embedded sections). The image showing membrane staining of epithelial cell in intestinal gland.



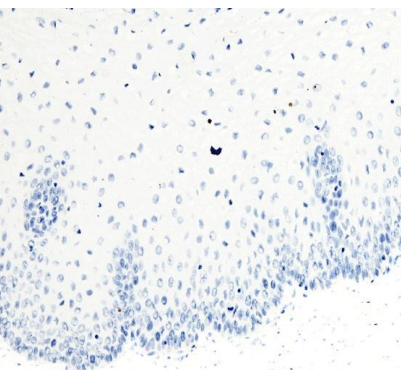
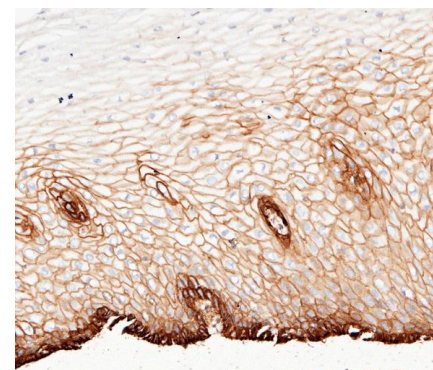
Immunohistochemical staining of human CD147 in human placenta with rabbit monoclonal antibody (1:5000, formalin-fixed paraffin embedded sections). The image showing positive staining of trophoblast.



Immunohistochemical staining of human CD147 in human liver with rabbit monoclonal antibody (1:5000, formalin-fixed paraffin embedded sections). The image showing membrane staining of hepatocyte.



Immunohistochemical staining of human CD147 in human gastric cancer with rabbit monoclonal antibody (1:5000, formalin-fixed paraffin embedded sections). The image showing membrane staining of epithelial cell.



CD147 Antibody	+
CD147 Antigen	-

+
+

Immunohistochemical staining of human CD147 in human esophagus with rabbit monoclonal antibody (1:5000, formalin-fixed paraffin embedded sections). The image showing membrane staining of squamous epithelial cell. The left panel: tissue incubated with primary antibody; The right panel: tissue incubated with the mixture of primary antibody and antigen (recombinant protein).

Manufactured By Sino Biological Inc., FOR RESEARCH USE ONLY. NOT FOR USE IN HUMANS.

Tel: 215-583-7898 (US); +86-400-890-9989(Global) • <http://www.sinobiological.com>

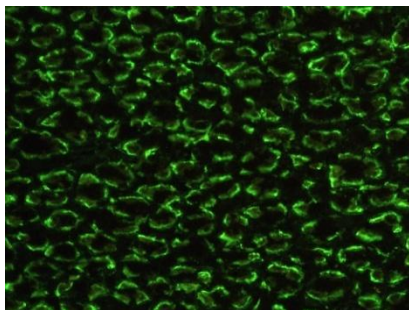
CD147 / EMMPRIN / Basigin Antibody, Rabbit MAb

Catalog Number: 10186-R125

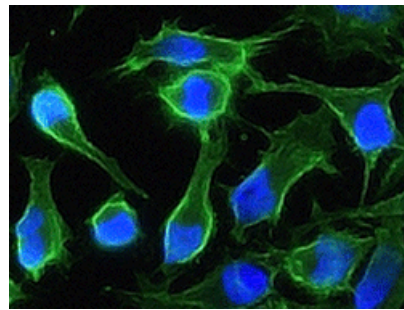
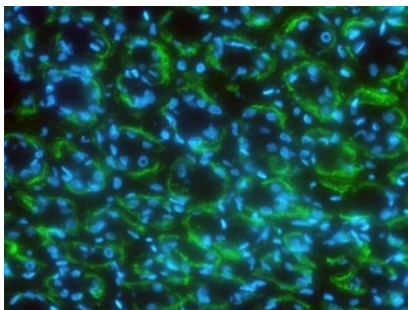


Sino Biological
Biological Solution Specialist

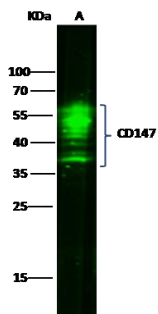
EliteRmab® is a registered trademark of Sino Biological Inc.



Immunofluorescence staining of CD147 in monkey stomach with rabbit monoclonal antibody (1:1000, frozen section). The image showing membrane staining of gastric gland cell. The right panel: merge with DAPI



Immunofluorescence staining of human CD147 in HeLa cells with rabbit monoclonal antibody (1:200). The image showing membrane staining of HeLa cells.

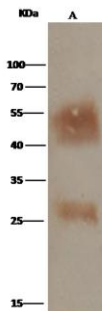


Anti-CD147 rabbit monoclonal antibody at 1:500 dilution
Lane A: A431 Whole Cell Lysate

Lysates/proteins at 30 µg per lane.
Secondary
Goat Anti-Rabbit IgG H&L (Dylight800) at 1/10000 dilution.

Developed using the Odyssey technique.
Performed under reducing conditions.

Predicted band size: 42 kDa
Observed band size: 54 kDa



CD147 was immunoprecipitated using:
Lane A: 0.5 mg K562 Whole Cell Lysate

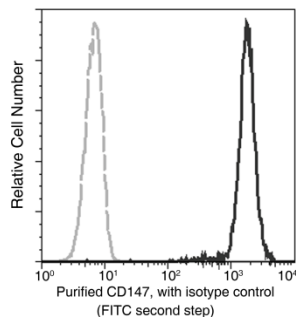
2 µL anti-CD147 rabbit monoclonal antibody and 15 µL of 50 % Protein G agarose.

Primary antibody:
Anti-CD147 rabbit monoclonal antibody, at 1:100 dilution

Secondary antibody:
Clean-Blot® IP Detection Reagent (HRP) at 1:1000 dilution

Developed using the DAB staining technique.
Performed under reducing conditions.

Predicted band size: 42 kDa
Observed band size: 50 kDa



Analysis of anti-CD147 reactivity on HeLa cells.

Flow cytometry was performed on a BD FACSCalibur flow cytometry system.
Please refer to www.sinobiological.com/Flow-Cytometry-FACS-Protocols-a-750.html for technical protocols.