

CD147 / EMMPRIN / Basigin Antibody (FITC), Rabbit MAb



Sino Biological
Biological Solution Specialist

Catalog Number: 10186-R125-F

EliteRmab® is a registered trademark of Sino Biological Inc.

GENERAL INFORMATION	
Immunogen:	Recombinant Human CD147 protein (Catalog#10186-H08H)
Reagents:	FITC-conjugated Rabbit monoclonal antibody
Preparation	This antibody was obtained from a rabbit immunized with purified, recombinant Human CD147 / Basigin (rh CD147; Catalog#10186-H08H; NP_940991.1; Met 1-His 205) and conjugated with FITC under optimum conditions, the unreacted FITC was removed.
Ig Type:	Rabbit IgG
Clone ID:	125
Specificity:	Human CD147 / Basigin / BSG
Concentration:	10 µl/Test, 0.1 mg/ml
Formulation:	Aqueous solution containing 0.5% BSA and 0.09% sodium azide
Storage:	This antibody is stable for 12 months from date of receipt when stored at 2°C-8°C. Protected from prolonged exposure to light. Do not freeze! Sodium azide is toxic to cells and should be disposed of properly. Flush with large volumes of water during disposal.
APPLICATIONS	
Applications:	FCM, ICC/IF
RECOMMENDED CONCENTRATION	
ICC/IF	ICC/IF: 1-10 µg/mL

Please Note: Optimal concentrations/dilutions should be determined by the end user.

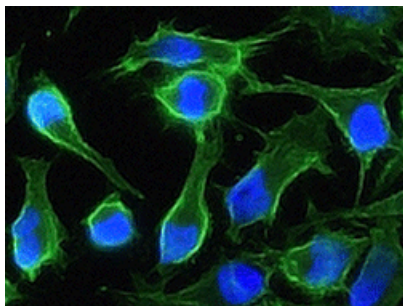
CD147 / EMMPRIN / Basigin Antibody (FITC), Rabbit MAb

Catalog Number: 10186-R125-F

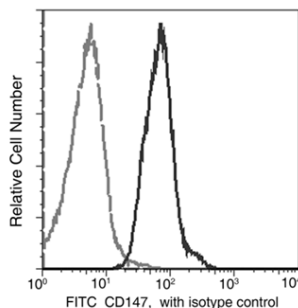


Sino Biological
Biological Solution Specialist

EliteRmab® is a registered trademark of Sino Biological Inc.

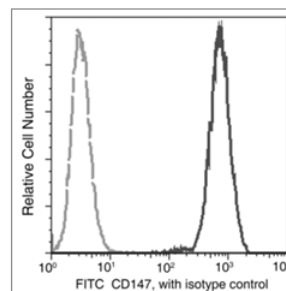


Immunofluorescence staining of human CD147 in HeLa cells with rabbit monoclonal antibody (5 µg/mL). The image showing membrane staining of HeLa cells. Primary antibody (FITC conjugated) was incubated for 1 hour at 37°C.



Profile of peripheral blood lymphocytes analyzed by flow cytometry. The fluorescence histograms were derived from events with the forward and side light-scatter characteristics of viable lymphocytes.

Flow cytometry was performed on a BD FACSCalibur flow cytometry system. Please refer to www.sinobiological.com/Flow-Cytometry-FACS-Protocols-a-750.html for technical protocols.



Analysis of anti-CD147 reactivity on HeLa cells.

Profile of anti-CD147 reactivity on HeLa cells, PC-3 cells, A549 cells analyzed by flow cytometry.

Flow cytometry was performed on a BD FACSCalibur flow cytometry system. Please refer to www.sinobiological.com/Flow-Cytometry-FACS-Protocols-a-750.html for technical protocols.