

ESAM / Endothelial Cell Adhesion Molecule Antibody (PE), Rabbit MAb



Sino Biological
Biological Solution Specialist

Catalog Number: 10187-R113-P

EliteRmab® is a registered trademark of Sino Biological Inc.

GENERAL INFORMATION

Immunogen:	Recombinant Human ESAM protein (Catalog#10187-H08H)
Reagents:	PE-conjugated Rabbit monoclonal antibody
Preparation	This antibody was obtained from a rabbit immunized with purified, recombinant Human ESAM (rh ESAM; Catalog#10187-H08H; NP_620411.2; Met 1-Ala 248) and conjugated with PE under optimum conditions, the unreacted PE was removed.
Ig Type:	Rabbit IgG
Clone ID:	113
Specificity:	Human ESAM
Concentration:	5 µl/Test, 0.1 mg/ml
Formulation:	PBS solution containing 0.5% BSA and 0.09% sodium azide
Storage:	This antibody can be stored at 2°C-8°C for twelve months without detectable loss of activity. Protected from prolonged exposure to light. Do not freeze ! Sodium azide is toxic to cells and should be disposed of properly. Flush with large volumes of water during disposal.
Alternative Names:	ESAM

APPLICATIONS

Applications:	FCM
----------------------	-----

RECOMMENDED CONCENTRATION

Please Note: Optimal concentrations/dilutions should be determined by the end user.

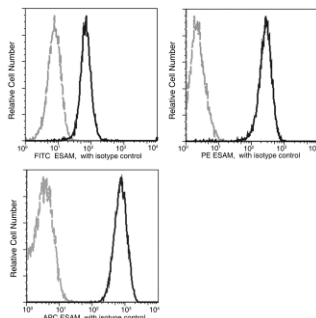
ESAM / Endothelial Cell Adhesion Molecule Antibody (PE), Rabbit MAb



Sino Biological
Biological Solution Specialist

Catalog Number: 10187-R113-P

EliteRmab® is a registered trademark of Sino Biological Inc.



Profile of anti-ESAM reactivity on HUVEC cells
analyzed by flow cytometry.

Flow cytometry was performed on a BD
FACSCalibur flow cytometry system.
Please refer to www.sinobiological.com/Flow-Cytometry-FACS-Protocols-a-750.html for
technical protocols.