

ESAM / Endothelial Cell Adhesion Molecule Antibody (PE), Rabbit MAb



Sino Biological
Biological Solution Specialist

Catalog Number: 10187-R113-P

EliteRmab® is a registered trademark of Sino Biological Inc.

GENERAL INFORMATION	
Immunogen:	Recombinant Human ESAM protein (Catalog#10187-H08H)
Reagents:	PE-conjugated Rabbit monoclonal antibody
Preparation	This antibody was obtained from a rabbit immunized with purified, recombinant Human ESAM (rh ESAM; Catalog#10187-H08H; NP_620411.2; Met 1-Ala 248) and conjugated with PE under optimum conditions, the unreacted PE was removed.
Ig Type:	Rabbit IgG
Clone ID:	113
Specificity:	Human ESAM
Concentration:	5 µl/Test, 0.1 mg/ml
Formulation:	Aqueous solution containing 0.5% BSA and 0.09% sodium azide
Storage:	This antibody is stable for 12 months from date of receipt when stored at 2°C-8°C. Protected from prolonged exposure to light. Do not freeze! Sodium azide is toxic to cells and should be disposed of properly. Flush with large volumes of water during disposal.
APPLICATIONS	
Applications:	FCM
RECOMMENDED CONCENTRATION	

Please Note: Optimal concentrations/dilutions should be determined by the end user.

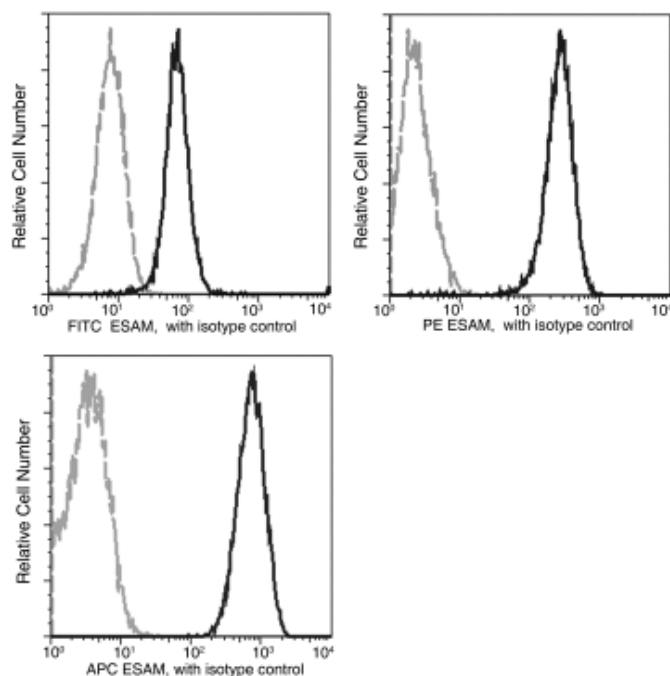
ESAM / Endothelial Cell Adhesion Molecule Antibody (PE), Rabbit MAb

Catalog Number: 10187-R113-P



Sino Biological
Biological Solution Specialist

EliteRmab® is a registered trademark of Sino Biological Inc.



Profile of anti-ESAM reactivity on HUVEC cells analyzed by flow cytometry.

Flow cytometry was performed on a BD FACSCalibur flow cytometry system.

Please refer to www.sinobiological.com/Flow-Cytometry-FACS-Protocols-a-750.html for technical protocols.