

Leptin Receptor/CD295 Antibody, Rabbit PAb, Antigen Affinity Purified



Sino Biological
Biological Solution Specialist

Catalog Number: 102018-T40

GENERAL INFORMATION

Immunogen:	A synthetic peptide corresponding to the N-terminus of the Rat Leptin Receptor/CD295
Preparation	Produced in rabbits immunized with a synthetic peptide corresponding to the N-terminus of the Rat Leptin Receptor/CD295, and purified by antigen affinity chromatography.
Ig Type:	Rabbit IgG
Specificity:	Rat Leptin Receptor/CD295
Formulation:	0.2 µm filtered solution in PBS
Storage:	This antibody can be stored at 2°C-8°C for one month without detectable loss of activity. Antibody products are stable for twelve months from date of receipt when stored at -20°C to -80°C. Preservative-Free. Sodium azide is recommended to avoid contamination (final concentration 0.05%-0.1%). It is toxic to cells and should be disposed of properly. Avoid repeated freeze-thaw cycles.

APPLICATIONS

Applications:	WB, IHC-P
----------------------	-----------

RECOMMENDED CONCENTRATION

IHC-P	IHC-P: 1:2500-1:10000
Western Blot	WB: 1:500-1:1000

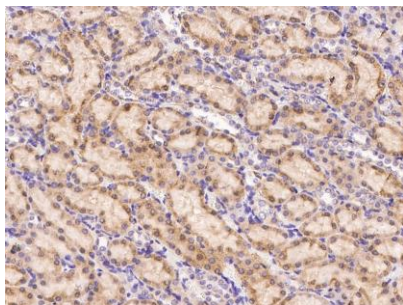
Please Note: Optimal concentrations/dilutions should be determined by the end user.

Leptin Receptor/CD295 Antibody, Rabbit PAb, Antigen Affinity Purified

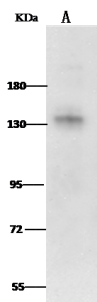


Sino Biological
Biological Solution Specialist

Catalog Number: 102018-T40



Immunohistochemical staining of rat Lepr in rat kidney with rabbit polyclonal antibody (1:5000, formalin-fixed paraffin embedded sections).



Anti-Lepr rabbit polyclonal antibody at 1:500 dilution
Lane A: Rat brain tissue lysate

Lysates/proteins at 30µg per lane.
Secondary
Goat Anti-Rabbit IgG (H+L)/HRP at 1/10000 dilution.

Developed using the ECL technique.
Performed under reducing conditions.

Predicted band size:132 kDa
Observed band size:130 kDa