

Calbindin Antibody, Rabbit PAb, Antigen Affinity Purified



Sino Biological
Biological Solution Specialist

Catalog Number: 102051-T46

GENERAL INFORMATION

Immunogen:	A synthetic peptide corresponding to the N-terminus of the Human Calbindin
Preparation	Produced in rabbits immunized with a synthetic peptide corresponding to the N-terminus of the Human Calbindin, and purified by antigen affinity chromatography.
Ig Type:	Rabbit IgG
Specificity:	Human Rat (Species predicted to react based on 100% sequence homology)
Formulation:	0.2 µm filtered solution in PBS
Storage:	This antibody can be stored at 2°C-8°C for one month without detectable loss of activity. Antibody products are stable for twelve months from date of receipt when stored at -20°C to -80°C. Preservative-Free. Avoid repeated freeze-thaw cycles.
Alternative Names:	CALB,D-28K

APPLICATIONS

Applications:	WB,IHC-P,ICC/IF,IP
----------------------	--------------------

RECOMMENDED CONCENTRATION

IHC-P	IHC-P: 1:500-1:2000
ICC/IF	ICC/IF: 1:300-1:10000
Western Blot	WB: 1:500-1:2000
Immunoprecipitation	IP: 4-8 µL/mg of lysate

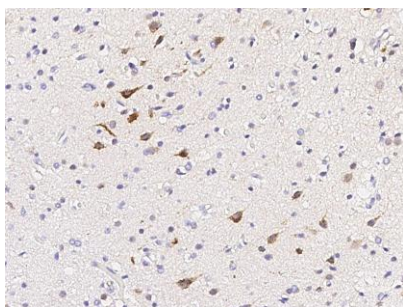
Please Note: Optimal concentrations/dilutions should be determined by the end user.

Calbindin Antibody, Rabbit PAb, Antigen Affinity Purified

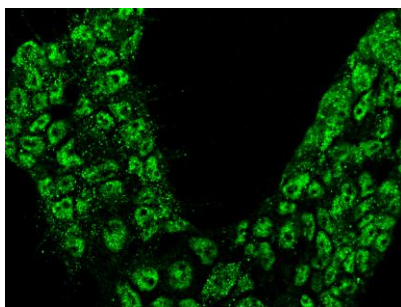


Sino Biological
Biological Solution Specialist

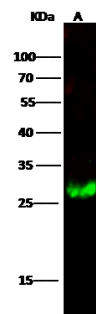
Catalog Number: 102051-T46



Immunohistochemical staining of human CALB1 in human brain with rabbit polyclonal antibody (1:1000, formalin-fixed paraffin embedded sections).



Immunofluorescence staining of CALB1 in 293 cells. Cells were fixed with 4% PFA, blocked with 10% serum, and incubated with rabbit anti-human CALB1 polyclonal antibody (1:1000) at 4°C overnight. Then cells were stained with the Alexa Fluor®488-conjugated Goat Anti-rabbit IgG secondary antibody (green). Positive staining was localized to cytoplasm and nucleus.



Anti-CALB1 rabbit polyclonal antibody at 1:500 dilution.

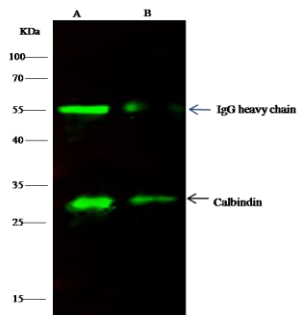
Lane A: Mouse kidney tissue lysate

Lysates/proteins at 30 µg per lane.

Secondary
Goat Anti- Rabbit IgG H&L (Dylight 800) at 1/10000 dilution.

Developed using the Odyssey technique.
Performed under reducing conditions.

Predicted band size: 30 kDa
Observed band size: 27 kDa



CALB1 was immunoprecipitated using:
Lane A: 0.5 mg HepG2 Whole Cell Lysate
Lane B: 0.5 mg 293T Whole Cell Lysate

4 µL anti-CALB1 rabbit polyclonal antibody
and 60 µg of Immunomagnetic beads Protein
G.

Primary antibody:
Anti-CALB1 rabbit polyclonal antibody, at 1:100
dilution

Secondary antibody:
Dylight 800-labeled antibody to rabbit IgG
(H+L), at 1:5000 dilution

Developed using the odyssey technique.
Performed under reducing conditions.

Predicted band size: 30 kDa
Observed band size: 30 kDa