

# SDHB Antibody, Rabbit PAb, Antigen Affinity Purified



Sino Biological  
Biological Solution Specialist

Catalog Number: 102069-T08

## GENERAL INFORMATION

Immunogen:	A synthetic peptide corresponding to the C-terminus of the Human SDHB
Preparation	Produced in rabbits immunized with a synthetic peptide corresponding to the C-terminus of the Human SDHB, and purified by antigen affinity chromatography.
Ig Type:	Rabbit IgG
Specificity:	Human SDHB
Formulation:	0.2 µm filtered solution in PBS
Storage:	This antibody can be stored at 2°C-8°C for one month without detectable loss of activity. Antibody products are stable for twelve months from date of receipt when stored at -20°C to -80°C. Preservative-Free. Sodium azide is recommended to avoid contamination (final concentration 0.05%-0.1%). It is toxic to cells and should be disposed of properly. Avoid repeated freeze-thaw cycles.

## APPLICATIONS

Applications:	IHC-P
---------------	-------

## RECOMMENDED CONCENTRATION

IHC-P	IHC-P: 1:500-1:2000
-------	---------------------

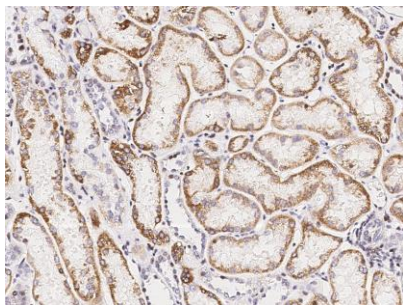
**Please Note: Optimal concentrations/dilutions should be determined by the end user.**

# SDHB Antibody, Rabbit PAb, Antigen Affinity Purified

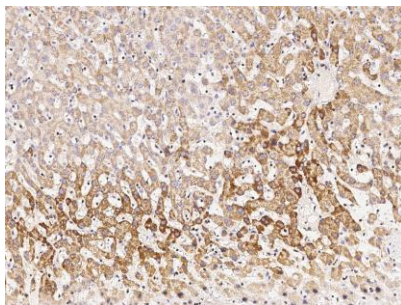
Catalog Number: 102069-T08



Sino Biological  
Biological Solution Specialist



Immunohistochemical staining of human SDHB in human kidney with rabbit polyclonal antibody (1:1000, formalin-fixed paraffin embedded sections).



Immunohistochemical staining of human SDHB in human liver with rabbit polyclonal antibody (1:1000, formalin-fixed paraffin embedded sections).