

# PSMB8 Antibody, Rabbit PAb, Antigen Affinity Purified



Sino Biological  
Biological Solution Specialist

Catalog Number: 102075-T46

## GENERAL INFORMATION

<b>Immunogen:</b>	A synthetic peptide corresponding to the C-terminus of the Human PSMB8
<b>Preparation</b>	Produced in rabbits immunized with a synthetic peptide corresponding to the C-terminus of the Human PSMB8, and purified by antigen affinity chromatography.
<b>Ig Type:</b>	Rabbit IgG
<b>Specificity:</b>	Human PSMB8
<b>Formulation:</b>	0.2 µm filtered solution in PBS
<b>Storage:</b>	This antibody can be stored at 2°C-8°C for one month without detectable loss of activity. Antibody products are stable for twelve months from date of receipt when stored at -20°C to -80°C. Preservative-Free. Avoid repeated freeze-thaw cycles.
<b>Alternative Names:</b>	ALDD,D6S216,D6S216E,JMP,LMP7,NKJO,PSMB5i,RING10

## APPLICATIONS

<b>Applications:</b>	WB,IHC-P,ICC/IF,IP
----------------------	--------------------

## RECOMMENDED CONCENTRATION

<b>IHC-P</b>	IHC-P: 1:500-1:2000
<b>ICC/IF</b>	ICC/IF: 1:300-1:10000
<b>Western Blot</b>	WB: 1:500-1:2000
<b>Immunoprecipitation</b>	IP: 5-10 µL/mg of lysate

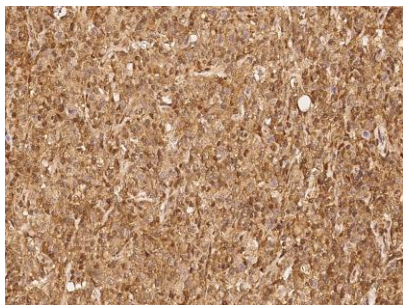
*Please Note: Optimal concentrations/dilutions should be determined by the end user.*

# PSMB8 Antibody, Rabbit PAb, Antigen Affinity Purified

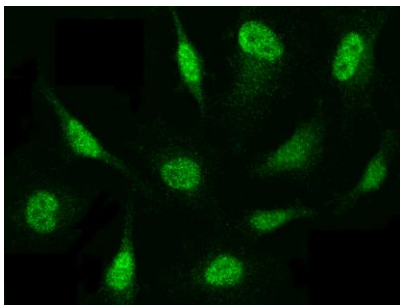


Sino Biological  
Biological Solution Specialist

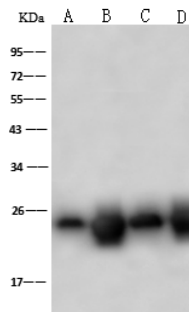
Catalog Number: 102075-T46



Immunohistochemical staining of human PSMB8 in human lymphoma with rabbit polyclonal antibody at 1:1000 dilution, formalin-fixed paraffin embedded sections.



Immunofluorescence staining of PSMB8 in HeLa cells. Cells were fixed with 4% PFA, permeabilized with 0.3% Triton X-100 in PBS, blocked with 10% serum, and incubated with rabbit anti-Human PSMB8 polyclonal antibody (dilution ratio 1:1000) at 4°C overnight. Then cells were stained with the Alexa Fluor 488-conjugated Goat Anti-rabbit IgG secondary antibody (green). Positive staining was localized to cytoplasm and nucleus.



Anti-PSMB8 rabbit polyclonal antibody at 1:500 dilution

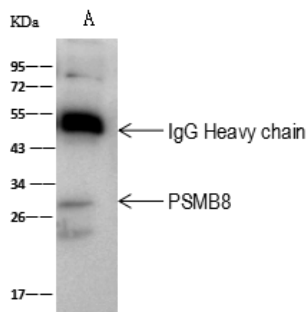
Lane A: HeLa Whole Cell Lysate  
Lane B: MCF7 Whole Cell Lysate  
Lane C: A431 Whole Cell Lysate  
Lane D: Raji Whole Cell Lysate

Lysates/proteins at 30 µg per lane.

Secondary  
Goat Anti-Rabbit IgG (H+L)/HRP at 1/10000 dilution.

Developed using the ECL technique. Performed under reducing conditions.

Predicted band size: 30 kDa  
Observed band size: 25 kDa



PSMB8 was immunoprecipitated using:  
Lane A: 0.5 mg A431 Whole Cell Lysate

2 µL anti-PSMB8 rabbit polyclonal antibody  
and 60 µg of Immunomagnetic beads Protein  
A/G. Primary antibody:

Anti-PSMB8 rabbit polyclonal antibody, at  
1:100 dilution

Secondary antibody:  
Goat Anti-Rabbit IgG (H+L)/HRP at 1/10000  
dilution

Developed using the ECL technique.  
Performed under reducing conditions.

Predicted band size: 30 kDa  
Observed band size: 30 kDa