

NPHS2 Antibody, Rabbit PAb, Antigen Affinity Purified



Sino Biological Inc.
Biological Solution Specialist

Catalog Number: 102168-T04

GENERAL INFORMATION

Immunogen:	A synthetic peptide corresponding to the C-terminus of the Human NPHS2
Preparation	Produced in rabbits immunized with a synthetic peptide corresponding to the C-terminus of the Human NPHS2, and purified by antigen affinity chromatography.
Ig Type:	Rabbit IgG
Specificity:	Human NPHS2
Formulation:	0.2 µm filtered solution in PBS
Storage:	This antibody can be stored at 2°C-8°C for one month without detectable loss of activity. Antibody products are stable for twelve months from date of receipt when stored at -20°C to -80°C. Preservative-Free. Sodium azide is recommended to avoid contamination (final concentration 0.05%-0.1%). It is toxic to cells and should be disposed of properly. Avoid repeated freeze-thaw cycles.

APPLICATIONS

Applications:	IP
----------------------	----

RECOMMENDED CONCENTRATION

Western Blot	WB: 5-20 µg/ml
Immunoprecipitation	IP: 4-8 µL/mg of lysate

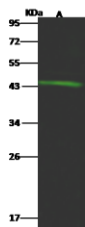
Please Note: Optimal concentrations/dilutions should be determined by the end user.

NPHS2 Antibody, Rabbit PAb, Antigen Affinity Purified

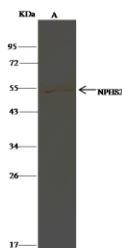


Sino Biological Inc.
Biological Solution Specialist

Catalog Number: 102168-T04



Lanes	A
Sample (whole cell lysate)	HepG2
Sample Volume (μg/lane)	30
Gel	13% SDS-PAGE reducing gel
Recommended Concentration	5-20 μg/ml
Secondary Antibody	Dylight 800-labeled Antibody To Rabbit IgG (H+L) ₂ at 1:5000 dilution.
Developed using Odyssey imaging system.	
Explanation	Predicted band size : 42 kDa Observed band size : 44 kDa



Lanes	A
Sample (whole cell lysate)	A431
Sample quantity	0.5 mg
IP antibody quantity	4 μL
Protein G agarose	15 μl of 50% Protein G agarose
Gel	13% SDS-PAGE reducing gel
Primary antibody	KLJ1-SIMCC-sinoA2166/KLJ1-SIMCC-sinoA2168 antibody at 10 μg/ml
Secondary antibody	Cleam-His60 IP Detection Reagent (DIP) at 1:500 dilution