

EphB4 Antibody (FITC), Mouse MAb



Sino Biological
Biological Solution Specialist

Catalog Number: 10235-MM04-F

GENERAL INFORMATION	
Immunogen:	Recombinant Human EphB4 protein (Catalog#10235-H08H)
Reagents:	FITC-conjugated Mouse monoclonal antibody
Preparation	This antibody was produced from a hybridoma resulting from the fusion of a mouse myeloma with B cells obtained from a mouse immunized with purified, recombinant Human EphB4 (rhEphB4; Catalog#10235-H08H; NP_004435.3; Met 1-Ala 539) and conjugated with FITC under optimum conditions, the unreacted FITC was removed.
Ig Type:	Mouse IgG1
Clone ID:	04
Specificity:	Human EphB4
Concentration:	10 µl/Test, 0.1 mg/ml
Formulation:	Aqueous solution containing 0.5% BSA and 0.09% sodium azide
Storage:	This antibody is stable for 12 months from date of receipt when stored at 2°C-8°C. Protected from prolonged exposure to light. Do not freeze! Sodium azide is toxic to cells and should be disposed of properly. Flush with large volumes of water during disposal.
APPLICATIONS	
Applications:	FCM, ICC/IF
RECOMMENDED CONCENTRATION	
ICC/IF	ICC/IF: 5-20 µg/mL

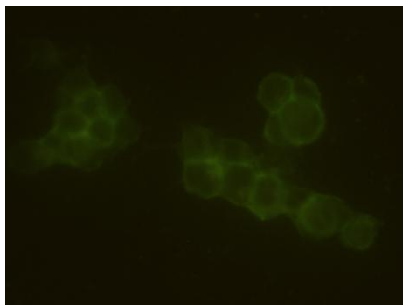
Please Note: Optimal concentrations/dilutions should be determined by the end user.

EphB4 Antibody (FITC), Mouse MAb

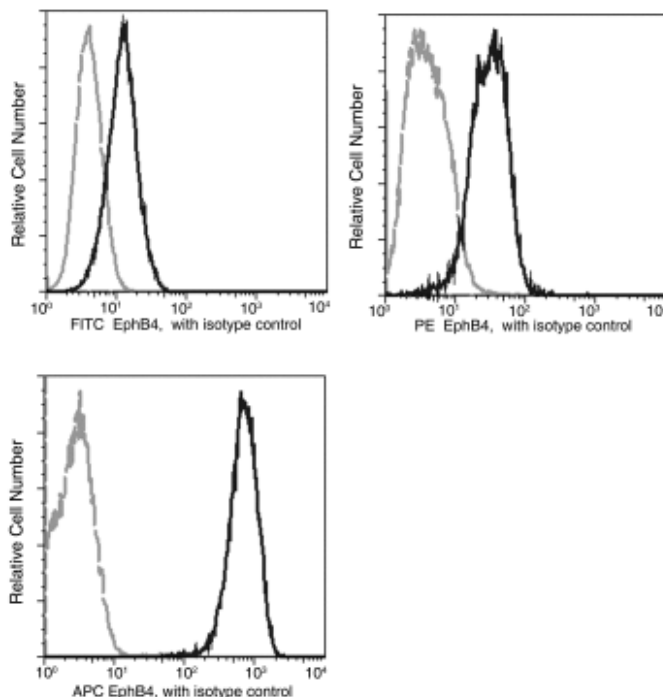


Sino Biological
Biological Solution Specialist

Catalog Number: 10235-MM04-F



Immunofluorescence staining of Human EphB4 in MCF7 cells. Cells were fixed with 4% PFA, permeabilized with 1% Triton X-100 in PBS, blocked with 10% serum, and incubated with Mouse anti-Human EphB4 monoclonal antibody (FITC-conjugated, 10 µg/ml) at 37°C 1 hour. Positive staining was localized to plasma membrane.



Profile of anti-EphB4 reactivity on MCF-7 cells analyzed by flow cytometry.

Flow cytometry was performed on a BD FACSCalibur flow cytometry system. Please refer to www.sinobiological.com/Flow-Cytometry-FACS-Protocols-a-750.html for technical protocols.