

MAP2 / METAP2 Antibody, Rabbit PAb, Antigen Affinity Purified



Sino Biological
Biological Solution Specialist

Catalog Number: 10245-T60

GENERAL INFORMATION

Immunogen:	Recombinant Human MAP2 / METAP2 Protein (Catalog#10245-H08B)
Preparation	Produced in rabbits immunized with purified, recombinant Human MAP2 / METAP2 (rh MAP2 / METAP2; Catalog#10245-H08B; NP_006829.1; Met1-Tyr478). MAP2 / METAP2 specific IgG was purified by Human MAP2 / METAP2 affinity chromatography.
Ig Type:	Rabbit IgG
Specificity:	Human MAP2 / METAP2
Formulation:	0.2 µm filtered solution in PBS
Storage:	This antibody can be stored at 2°C-8°C for one month without detectable loss of activity. Antibody products are stable for twelve months from date of receipt when stored at -20°C to -80°C. Preservative-Free. Sodium azide is recommended to avoid contamination (final concentration 0.05%-0.1%). It is toxic to cells and should be disposed of properly. Avoid repeated freeze-thaw cycles.

APPLICATIONS

Applications:	WB,ELISA,IHC-P,IP
----------------------	-------------------

RECOMMENDED CONCENTRATION

IHC-P	IHC-P: 1:2500-1:10000
Western Blot	WB: 1:500-1:2000
Immunoprecipitation	IP: 4-8 µL/mg of lysate
ELISA	ELISA: 1:5000-1:10000 This antibody can be used at 1:5000-1:10000 with the appropriate secondary reagents to detect Human MAP2 / METAP2.

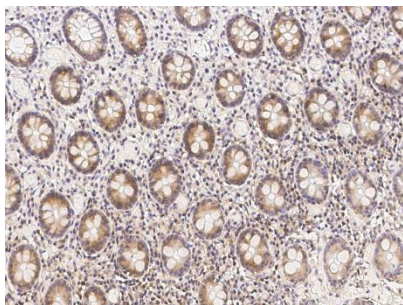
Please Note: Optimal concentrations/dilutions should be determined by the end user.

MAP2 / METAP2 Antibody, Rabbit PAb, Antigen Affinity Purified

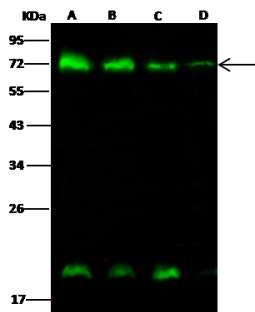


Sino Biological
Biological Solution Specialist

Catalog Number: 10245-T60



Immunohistochemical staining of human METAP2 in human small intestine with rabbit polyclonal antibody (1:5000, formalin-fixed paraffin embedded sections).



Anti-METAP2 rabbit polyclonal antibody at 1:500 dilution

Lane A: HepG2 Whole Cell Lysate
Lane B: 293T Whole Cell Lysate
Lane C: HeLa Whole Cell Lysate
Lane D: PC12 Whole Cell Lysate

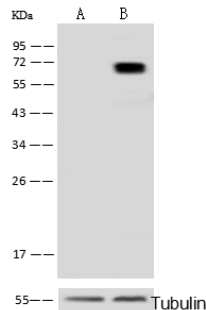
Lysates/proteins at 30 µg per lane.

Secondary

Goat Anti- Rabbit IgG H&L (Dylight 800) at 1/10000 dilution.

Developed using the Odyssey technique.
Performed under reducing conditions.

Predicted band size: 52 kDa
Observed band size: 72 kDa
(We are unsure as to the identity of these extra bands.)



Anti-METAP2 rabbit polyclonal antibody at 1:500 dilution

Lane A: METAP2 knockout HeLa Whole Cell Lysate
Lane B: HeLa Whole Cell Lysate

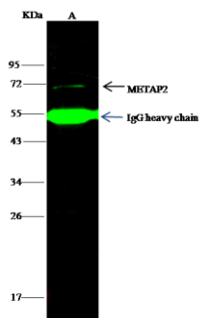
Lysates/proteins at 10 µg per lane.

Secondary

Goat Anti-Rabbit IgG (H+L)/HRP at 1/10000 dilution.

Developed using the ECL technique.
Performed under reducing conditions.

Predicted band size: 52 kDa
Observed band size: 72 kDa



METAP2 was immunoprecipitated using:
Lane A: 0.5 mg HepG2 Whole Cell Lysate

4 µL anti-METAP2 rabbit polyclonal antibody
and 15 µL of 50 % Protein G agarose.

Primary antibody:

Anti-METAP2 rabbit polyclonal antibody, at 1:100 dilution

Secondary antibody:

Dylight 800-labeled antibody to rabbit IgG (H+L), at 1:5000 dilution

Developed using the Odyssey technique.
Performed under reducing conditions.

Predicted band size: 52 kDa

Observed band size: 72 kDa

Manufactured By Sino Biological Inc., FOR RESEARCH USE ONLY. NOT FOR USE IN HUMANS.

Tel: 215-583-7898 (US); +86-400-890-9989(Global) • <http://www.sinobiological.com>