

LACC1 Antibody, Rabbit PAb, Antigen Affinity Purified



Sino Biological
Biological Solution Specialist

Catalog Number: 102569-T04

GENERAL INFORMATION

Immunogen:	A synthetic peptide corresponding to the center region of the Human LACC1
Preparation	Produced in rabbits immunized with a synthetic peptide corresponding to the center region of the Human LACC1, and purified by antigen affinity chromatography.
Ig Type:	Rabbit IgG
Specificity:	Human LACC1
Formulation:	0.2 µm filtered solution in PBS
Storage:	This antibody can be stored at 2°C-8°C for one month without detectable loss of activity. Antibody products are stable for twelve months from date of receipt when stored at -20°C to -80°C. Preservative-Free. Sodium azide is recommended to avoid contamination (final concentration 0.05%-0.1%). It is toxic to cells and should be disposed of properly. Avoid repeated freeze-thaw cycles.

APPLICATIONS

Applications:	IP
---------------	----

RECOMMENDED CONCENTRATION

Immunoprecipitation	IP: 4-8 µL/mg of lysate
---------------------	-------------------------

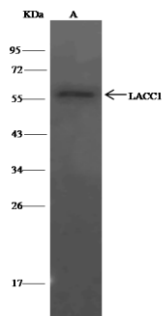
Please Note: Optimal concentrations/dilutions should be determined by the end user.

LACC1 Antibody, Rabbit PAb, Antigen Affinity Purified



Sino Biological
Biological Solution Specialist

Catalog Number: 102569-T04



LACC1 was immunoprecipitated using:
Lane A: 0.5 mg Jurkat Whole Cell Lysate

4 μ L anti-LACC1 rabbit polyclonal antibody
and 15 μ L of 50 % Protein G agarose.

Primary antibody:
Anti-LACC1 rabbit polyclonal antibody, at 1:100
dilution

Secondary antibody:
Clean-Blot[®] IP Detection Reagent (HRP) at
1:500 dilution

Developed using the DAB staining technique.
Performed under reducing conditions.

Predicted band size: 47 kDa
Observed band size: 47 kDa