

# Human CD32b / FCGR2B Protein (His & AVI Tag), Biotinylated

Catalog Number: 10259-H27H-B



Sino Biological  
Biological Solution Specialist

## General Information

### Gene Name Synonym:

CD32; CD32B; Fc gamma RIIB; FCGR2

### Protein Construction:

A DNA sequence encoding the extracellular domain (Ala 46-Ile 224) of mature human CD32b (NP\_001002274.1) protein was fused with a signal peptide at the N-terminus and a c-terminal polyhistidine tagged AVI tag at the C-terminus. The expressed protein was biotinylated in vivo by the Biotin-Protein ligase (BirA enzyme) which is co-expressed.

**Source:** Human

**Expression Host:** HEK293 Cells

## QC Testing

### Biotin/Protein Ratio:

0.7-1 as determined by the HABA assay.

**Purity:** > 95 % as determined by SDS-PAGE

### Bio Activity:

1. Measured by its binding ability in a functional ELISA. Immobilized Human IgG1 at 10 µg/ml (100 µl/well) can bind Human CD32b (Cat: 10259-H27H-B). The  $EC_{50}$  of Human CD32b (Cat: 10259-H27H-B) is 1.6 - 3.7 µg/ml.  
2. Using the Octet RED System, the affinity constant (Kd) of CD32B / Fcgr2b Protein, Human, Recombinant (His & AVI Tag), Biotinylated (Cat. 10259-H27H-B) bound to Human IgG1 was 10<sup>-6</sup>-10<sup>-8</sup>M.

### Endotoxin:

< 1.0 EU per µg of the protein as determined by the LAL method

### Stability:

Samples are stable for up to twelve months from date of receipt at -70 °C

**Predicted N terminal:** Ala 46

### Molecular Mass:

The recombinant mature human CD32b consists of 214 amino acids after proteolytic removal of the signal peptide and predicts a molecular mass of 24 kDa. In SDS-PAGE under reducing conditions, the apparent molecular mass of the protein is approximately 35 kDa protein due to glycosylation.

### Formulation:

Lyophilized from sterile PBS, pH 7.4

Normally 5 % - 8 % trehalose, mannitol and 0.01% Tween80 are added as protectants before lyophilization. Specific concentrations are included in the hardcopy of COA. Please contact us for any concerns or special requirements.

## Usage Guide

### Storage:

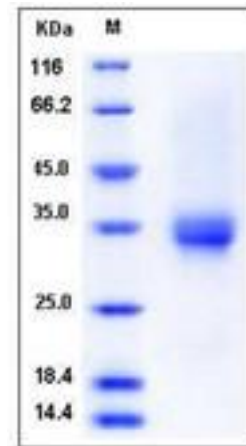
Store it under sterile conditions at -20°C to -80°C upon receiving. Recommend to aliquot the protein into smaller quantities for optimal storage.

**Avoid repeated freeze-thaw cycles.**

### Reconstitution:

Detailed reconstitution instructions are sent along with the products.

### SDS-PAGE:



**Manufactured By Sino Biological Inc., FOR RESEARCH USE ONLY. NOT FOR USE IN HUMANS.**

**For US Customer:** Fax: 267-657-0217 • Tel: 215-583-7898

**Global Customer:** Fax :+86-10-5862-8288 • Tel:+86-400-890-9989 • <http://www.sinobiological.com>