

Human PLGF Protein (Fc Tag)

Catalog Number: 10274-H05H



Sino Biological
Biological Solution Specialist

General Information

Gene Name Synonym:

D12S1900; PGFL; PLGF; PIGF-2; SHGC-10760

Protein Construction:

A DNA sequence encoding the human PGF (NP_002623.2) (Met1-Arg170) was expressed with the Fc region of mouse IgG1 at the C-terminus.

Source: Human

Expression Host: HEK293 Cells

QC Testing

Purity: > 95 % as determined by SDS-PAGE.

Bio Activity:

1. Measured by its binding ability in a functional ELISA. 2. Immobilized human PGF-mFc at 10 µg/mL (100 µL/well) can bind human VEGFR1-His (Cat:10136-H08H). The EC₅₀ of human VEGFR1-His (Cat:10136-H08H) is 0.19-0.43 µg/mL.

Endotoxin:

< 1.0 EU per µg protein as determined by the LAL method.

Stability:

Samples are stable for up to twelve months from date of receipt at -70 °C

Predicted N terminal: Leu 19

Molecular Mass:

The recombinant human PGF consists 386 amino acids and predicts a molecular mass of 43.7 kDa.

Formulation:

Lyophilized from sterile PBS, pH 7.4.

Normally 5 % - 8 % trehalose, mannitol and 0.01% Tween80 are added as protectants before lyophilization. Specific concentrations are included in the hardcopy of COA. Please contact us for any concerns or special requirements.

Usage Guide

Storage:

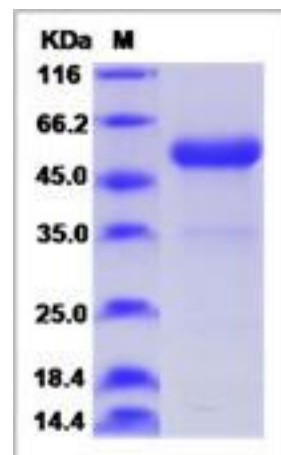
Store it under sterile conditions at -20°C to -80°C upon receiving. Recommend to aliquot the protein into smaller quantities for optimal storage.

Avoid repeated freeze-thaw cycles.

Reconstitution:

Detailed reconstitution instructions are sent along with the products.

SDS-PAGE:



References

1. Nagy JA, *et al.* (2003) VEGF-A(164/165) and PLGF: roles in angiogenesis and arteriogenesis. Trends Cardiovasc Med. 13(5): 169-75.
2. Chaballe L, *et al.* (2011) Placental growth factor: a tissue modelling factor with therapeutic potentials in neurology? Acta Neurol Belg. 111(1): 10-7.
3. Odorisio T, *et al.* (2006) The placental growth factor in skin angiogenesis. J Dermatol Sci. 41(1): 11-9.

Manufactured By Sino Biological Inc., FOR RESEARCH USE ONLY. NOT FOR USE IN HUMANS.

For US Customer: Fax: 267-657-0217 • Tel: 215-583-7898

Global Customer: Fax :+86-10-5862-8288 • Tel:+86-400-890-9989 • <http://www.sinobiological.com>