

# Pin1 Antibody, Rabbit PAb, Antigen Affinity Purified



Sino Biological  
Biological Solution Specialist

Catalog Number: 10282-T52

GENERAL INFORMATION	
Immunogen:	Recombinant Human Pin1 protein (Catalog#10282-H07E)
Preparation	Produced in rabbits immunized with purified, recombinant Human Pin1 (rh Pin1; Catalog#10282-H07E; Q13526-1; Met1-Glu163). Pin1 specific IgG was purified by Human Pin1 affinity chromatography.
Ig Type:	Rabbit IgG
Specificity:	Human Pin1
	No cross-reactivity in ELISA with Human BCAM Human CD146 Human CD171 Human EpCAM Human cell lysate (293 cell line)
Formulation:	0.2 µm filtered solution in PBS
Storage:	This antibody can be stored at 2°C-8°C for one month without detectable loss of activity. Antibody products are stable for twelve months from date of receipt when stored at -20°C to -80°C. Preservative-Free. Sodium azide is recommended to avoid contamination (final concentration 0.05%-0.1%). It is toxic to cells and should be disposed of properly. Avoid repeated freeze-thaw cycles.
APPLICATIONS	
Applications:	WB,ELISA,IP
RECOMMENDED CONCENTRATION	
Western Blot	WB: 1:500-1:2000
Immunoprecipitation	IP: 1-4 µL/mg of lysate
ELISA	ELISA: 1:5000-1:10000 This antibody can be used at 1:5000-1:10000 with the appropriate secondary reagents to detect Human Pin1.

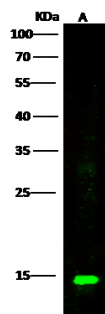
**Please Note: Optimal concentrations/dilutions should be determined by the end user.**

# Pin1 Antibody, Rabbit PAb, Antigen Affinity Purified

Catalog Number: 10282-T52



Sino Biological  
Biological Solution Specialist

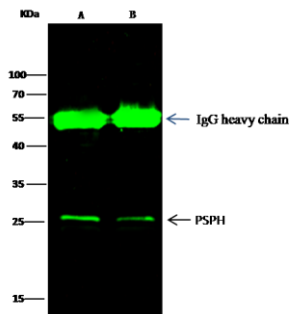


Anti-EK-PIN1 rabbit polyclonal antibody at 1:500 dilution  
Lane A: Jurkat Whole Cell Lysate

Lysates/proteins at 30 µg per lane.  
Secondary  
Goat Anti-Rabbit IgG H&L (Dylight800) at 1/10000 dilution.

Developed using the Odyssey technique.  
Performed under reducing conditions.

Predicted band size: 18 kDa  
Observed band size: 14 kDa



PSPH was immunoprecipitated using:  
Lane A: 0.5 mg K562 Whole Cell Lysate  
Lane B: 0.5 mg HepG2 Whole Cell Lysate

0.5 µL anti-PSPH rabbit monoclonal antibody  
and 15 µL of 50 % Protein G agarose.

Primary antibody:  
Anti-PSPH rabbit monoclonal antibody, at 1:1000 dilution

Secondary antibody:  
Dylight 800-labeled antibody to rabbit IgG (H+L), at 1:5000 dilution

Developed using the odssey technique.  
Performed under reducing conditions.

Predicted band size: 25 kDa  
Observed band size: 25 kDa