

C1ORF144 Antibody, Rabbit PAb, Antigen Affinity Purified



Sino Biological Inc.
Biological Solution Specialist

Catalog Number: 102868-T36

General Information

Immunogen:	A synthetic peptide corresponding to the center region of the Human C1ORF144
Rabbit IgG:	Rabbit IgG
Applications:	WB, IP
Specificity:	Human C1ORF144
Formulation:	0.2 µm filtered solution in PBS
Storage:	< -20°C

Preparation

Produced in rabbits immunized with a synthetic peptide corresponding to the center region of the Human C1ORF144, and purified by antigen affinity chromatography.

Storage

This antibody can be stored at 2°C-8°C for one month without detectable loss of activity. Antibody products are stable for twelve months from date of receipt when stored at -20°C to -70°C. **Preservative-Free.**

Sodium azide is recommended to avoid contamination (final concentration 0.05%-0.1%). It is toxic to cells and should be disposed of properly. **Avoid repeated freeze-thaw cycles.**

Manufactured By Sino Biological Inc., FOR RESEARCH USE ONLY. NOT FOR USE IN HUMANS.

Fax :+86-10-51029969 ● Tel:+86-400-890-9989 ● <http://www.sinobiological.com>

C1ORF144 Antibody, Rabbit PAb, Antigen Affinity Purified



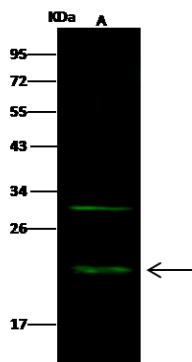
Sino Biological Inc.
Biological Solution Specialist

Catalog Number: 102868-T36

Applications

Western blot –

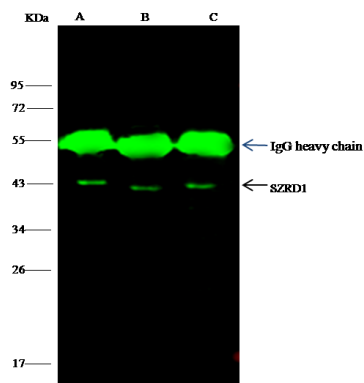
WB: 5-20 µg/ml



Lanes	B
Items	
Sample (whole cell lysate)	RPMI-8226
Sample Volume (µg/lane)	30
Gel	13% SDS-PAGE reducing gel
Recommended Concentration	5-20 µg/ml
Secondary Antibody	Dylight 800-labeled Antibody To Rabbit IgG (H+L), at 1:5000 dilution.
Developed using Odyssey imaging system.	
Explanation	Predicted band size : 17 kDa Observed band size : 23 kDa Additional bands at : 30 kDa (We are unsure as to the identity of these extra bands.)

Immunoprecipitation –

IP: 4-8 uL/mg of lysate



Lanes	A	B	C
Items			
Sample (whole cell lysate)	Jurkat	HeLa	A549
Sample quantity	0.5 mg		
IP antibody quantity	2 uL		
Protein G agarose	15 µl of 50% Protein G Agarose		
Gel	13% SDS-PAGE reducing gel		
Primary antibody	KLIH-SMCC-SINO2867+KLIH-SMCC-SINO2868 antibody at 10 µg/ml		
Secondary antibody	Dylight 800-labeled antibody to rabbit IgG (H+L), at 1:5000 dilution		

Manufactured By Sino Biological Inc., FOR RESEARCH USE ONLY. NOT FOR USE IN HUMANS.

Fax :+86-10-51029969 • Tel:+86-400-890-9989 • <http://www.sinobiological.com>