

SerpinE1 / PAI-1 Antibody, Rabbit PAb



Sino Biological
Biological Solution Specialist

Catalog Number: 10296-RP01

GENERAL INFORMATION	
Immunogen:	Recombinant Human SerpinE1 protein (Catalog#10296-H08H)
Preparation	Produced in rabbits immunized with purified, recombinant Human SerpinE1 (rh SerpinE1; Catalog#10296-H08H; NP_000593.1; Met 1-Pro 402). Total IgG was purified by Protein A affinity chromatography.
Ig Type:	Rabbit IgG
Specificity:	Human SerpinE1 / PLANH1 / PAI1
Formulation:	0.2 µm filtered solution in PBS
Storage:	This antibody can be stored at 2°C-8°C for one month without detectable loss of activity. Antibody products are stable for twelve months from date of receipt when stored at -20°C to -80°C. Preservative-Free. Sodium azide is recommended to avoid contamination (final concentration 0.05%-0.1%). It is toxic to cells and should be disposed of properly. Avoid repeated freeze-thaw cycles.
APPLICATIONS	
Applications:	WB, ELISA
RECOMMENDED CONCENTRATION	
Western Blot	WB: 1:500-1:2000
ELISA	ELISA: 1:1000-1:2000 This antibody can be used at 1:1000-1:2000 with the appropriate secondary reagents to detect Human SerpinE1.

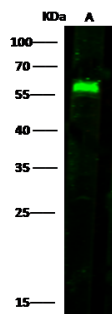
Please Note: Optimal concentrations/dilutions should be determined by the end user.

SerpinE1 / PAI-1 Antibody, Rabbit PAb



Sino Biological
Biological Solution Specialist

Catalog Number: 10296-RP01



Anti-SERPINE1 rabbit polyclonal antibody at
1:500 dilution
Lane A: HepG2 Whole Cell Lysate

Lysates/proteins at 30 µg per lane.
Secondary
Goat Anti-Rabbit IgG H&L (Dylight800) at
1/10000 dilution.

Developed using the Odyssey technique.
Performed under reducing conditions.

Predicted band size: 45 kDa
Observed band size: 57 kDa