

E-Selectin / CD62e / SELE Antibody (FITC), Rabbit MAb



Sino Biological
Biological Solution Specialist

Catalog Number: 10335-R103-F

EliteRmab® is a registered trademark of Sino Biological Inc.

GENERAL INFORMATION	
Immunogen:	Recombinant Human E-Selectin / CD62e protein (Catalog#10335-H08H)
Reagents:	FITC-conjugated Rabbit monoclonal antibody
Preparation	This antibody was obtained from a rabbit immunized with purified, recombinant Human E-Selectin / CD62e (rh E-Selectin / CD62e; Catalog#10335-H08H; NP_000441.2; Met 1-Pro 556) and conjugated with FITC under optimum conditions, the unreacted FITC was removed.
Ig Type:	Rabbit IgG
Clone ID:	103
Specificity:	Human E-Selectin / CD62e
Concentration:	10 µl/Test, 0.1 mg/ml
Formulation:	Aqueous solution containing 0.5% BSA and 0.09% sodium azide
Storage:	This antibody can be stored at 2°C-8°C for twelve months without detectable loss of activity. Protected from prolonged exposure to light. Do not freeze ! Sodium azide is toxic to cells and should be disposed of properly. Flush with large volumes of water during disposal.
Alternative Names:	CD62E,ELAM,ELAM1,ESEL,LECAM2
APPLICATIONS	
Applications:	FCM

Please Note: Optimal concentrations/dilutions should be determined by the end user.

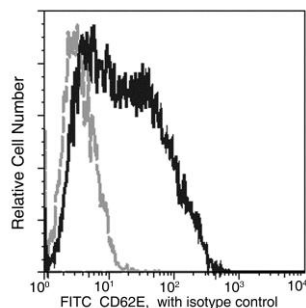
E-Selectin / CD62e / SELE Antibody (FITC), Rabbit MAb

Catalog Number: 10335-R103-F



Sino Biological
Biological Solution Specialist

EliteRmab® is a registered trademark of Sino Biological Inc.



Flow cytometric analysis of Human CD62E in HUVEC cells. HUVEC cells (Human umbilical vein endothelial cells) were treated with TNF- α (50 ng/ml, 18 hours). The cells were harvested and stained with FITC Rabbit anti-Human CD62E (10335-R103-F).

Flow cytometry was performed on a BD FACSCalibur flow cytometry system. Please refer to www.sinobiological.com/Flow-Cytometry-FACS-Protocols-a-750.html for technical protocols.