

# E-Selectin / CD62e / SELE Antibody (PE), Rabbit MAb



Sino Biological  
Biological Solution Specialist

Catalog Number: 10335-R103-P

EliteRmab® is a registered trademark of Sino Biological Inc.

GENERAL INFORMATION	
Immunogen:	Recombinant Human E-Selectin / CD62e protein (Catalog#10335-H08H)
Reagents:	PE-conjugated Rabbit monoclonal antibody
Preparation	This antibody was obtained from a rabbit immunized with purified, recombinant Human E-Selectin / CD62e (rh E-Selectin / CD62e; Catalog#10335-H08H; NP_000441.2; Met 1-Pro 556) and conjugated with PE under optimum conditions, the unreacted PE was removed.
Ig Type:	Rabbit IgG
Clone ID:	103
Specificity:	Human E-Selectin / CD62e
Concentration:	5 µl/Test, 0.1 mg/ml
Formulation:	Aqueous solution containing 0.5% BSA and 0.09% sodium azide
Storage:	This antibody is stable for 12 months from date of receipt when stored at 2°C-8°C. Protected from prolonged exposure to light. Do not freeze! Sodium azide is toxic to cells and should be disposed of properly. Flush with large volumes of water during disposal.
APPLICATIONS	
Applications:	FCM
RECOMMENDED CONCENTRATION	

**Please Note: Optimal concentrations/dilutions should be determined by the end user.**

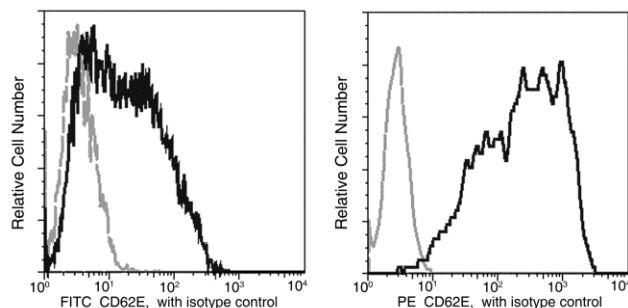
# E-Selectin / CD62e / SELE Antibody (PE), Rabbit MAb

Catalog Number: 10335-R103-P



Sino Biological  
Biological Solution Specialist

EliteRmab® is a registered trademark of Sino Biological Inc.



Flow cytometric analysis of Human CD62E in HUVEC cells. HUVEC cells (Human umbilical vein endothelial cells) were treated with TNF- $\alpha$  (50 ng/ml, 18 hours). The cells were harvested and stained with PE Rabbit anti-Human CD62E (10335-R103-P).

Flow cytometry was performed on a BD FACSCalibur flow cytometry system.  
Please refer to [www.sinobiological.com/Flow-Cytometry-FACS-Protocols-a-750.html](http://www.sinobiological.com/Flow-Cytometry-FACS-Protocols-a-750.html) for technical protocols.