

# HSP27 / HSPB1 Antibody, Mouse MAb



Sino Biological  
Biological Solution Specialist

Catalog Number: 10351-MM01

## GENERAL INFORMATION

<b>Immunogen:</b>	Recombinant Human HSP27 Protein (Catalog#10351-H08E)
<b>Preparation</b>	This antibody was produced from a hybridoma resulting from the fusion of a mouse myeloma with B cells obtained from a mouse immunized with purified, recombinant Human HSP27 (rh HSP27; Catalog#10351-H08E; NP_001532.1; Met 1 – Lys 205). The IgG fraction of the cell culture supernatant was purified by Protein A affinity chromatography.
<b>Ig Type:</b>	Mouse IgG2b
<b>Clone ID:</b>	4E 8H3
<b>Specificity:</b>	Human HSP27
	No cross-reactivity with E.coli cell lysate in ELISA.
<b>Formulation:</b>	0.2 µm filtered solution in PBS
<b>Storage:</b>	This antibody can be stored at 2°C-8°C for one month without detectable loss of activity. Antibody products are stable for twelve months from date of receipt when stored at -20°C to -80°C. Preservative-Free. Avoid repeated freeze-thaw cycles.

## APPLICATIONS

<b>Applications:</b>	WB,ELISA,ELISA(Det),IP
----------------------	------------------------

## RECOMMENDED CONCENTRATION

<b>Western Blot</b>	WB: 1:500-1:2000
<b>Immunoprecipitation</b>	IP: 4-6 µL/mg of lysate
<b>ELISA</b>	ELISA: 1:1000-1:2000 This antibody can be used at 1:1000-1:2000 with the appropriate secondary reagents to detect HSP27.
<b>Sandwich ELISA (Detection Ab)</b>	ELISA(Det): 1:1000-1:10000 This antibody will detect Human HSPB1 / HSP 27 in ELISA pair set (Catalog: # SEK10351). In a sandwich ELISA, it can be used as detection antibody when paired with (Catalog: # 10351-R017).

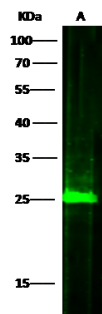
**Please Note: Optimal concentrations/dilutions should be determined by the end user.**

# HSP27 / HSPB1 Antibody, Mouse MAb



Sino Biological  
Biological Solution Specialist

Catalog Number: 10351-MM01

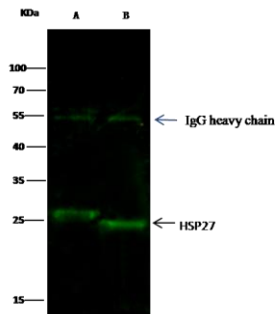


Anti-HSP27 mouse monoclonal antibody at 1:500 dilution  
Lane A: HepG2 Whole Cell Lysate

Lysates/proteins at 30 µg per lane.  
Secondary  
Goat Anti-Mouse IgG H&L (Dylight800) at 1/15000 dilution.

Developed using the Odyssey technique.  
Performed under reducing conditions.

Predicted band size: 23 kDa  
Observed band size: 26 kDa



HSP27 was immunoprecipitated using:  
Lane A: 0.5 mg HepG2 Whole Cell Lysate  
Lane B: 0.5 mg Hela Whole Cell Lysate

2 µL anti-HSP27 mouse monoclonal antibody  
and 15 µL of 50 % Protein G agarose.

Primary antibody:  
Anti-HSP27 mouse monoclonal antibody, at 1:200 dilution

Secondary antibody:  
Dylight 800-labeled antibody to Mouse IgG (H+L), at 1:7500 dilution

Developed using the odssey technique.  
Performed under reducing conditions.

Predicted band size: 25 kDa  
Observed band size: 25 kDa