

HSP27 / HSPB1 Antibody, Rabbit PAb, Antigen Affinity Purified



Sino Biological
Biological Solution Specialist

Catalog Number: 10351-T60

GENERAL INFORMATION

Immunogen:	Recombinant Human HSP27 protein (Catalog#10351-H08E)
Preparation	Produced in rabbits immunized with purified, recombinant Human HSP27 (rh HSP27; Catalog#10351-H08E; NP_001532.1; Met 1-Lys 205). HSP27 specific IgG was purified by Human HSP27 affinity chromatography.
Ig Type:	Rabbit IgG
Specificity:	Human HSP27
Formulation:	0.2 µm filtered solution in PBS
Storage:	This antibody can be stored at 2°C-8°C for one month without detectable loss of activity. Antibody products are stable for twelve months from date of receipt when stored at -20°C to -80°C. Preservative-Free. Sodium azide is recommended to avoid contamination (final concentration 0.05%-0.1%). It is toxic to cells and should be disposed of properly. Avoid repeated freeze-thaw cycles.

APPLICATIONS

Applications:	WB,ELISA,IHC-P,IP
----------------------	-------------------

RECOMMENDED CONCENTRATION

IHC-P	IHC-P: 1:500-1:2000
Western Blot	WB: 1:5000-1:20000
Immunoprecipitation	IP: 1-5µL/mg of lysate
ELISA	ELISA: 1:5000-1:10000 This antibody can be used at 1:5000-1:10000 with the appropriate secondary reagents to detect Human HSP27.

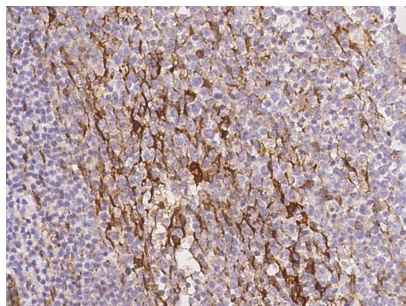
Please Note: Optimal concentrations/dilutions should be determined by the end user.

HSP27 / HSPB1 Antibody, Rabbit PAb, Antigen Affinity Purified

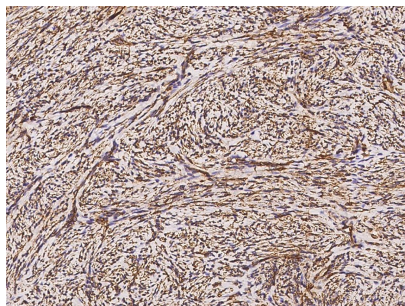


Sino Biological
Biological Solution Specialist

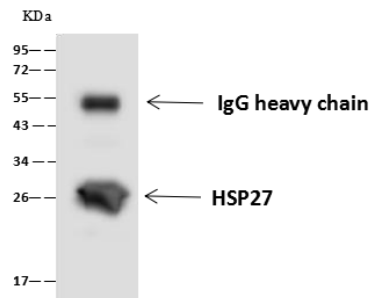
Catalog Number: 10351-T60



Immunohistochemical staining of human Hsp27 in human tonsil with rabbit polyclonal antibody at 1:1000 dilution, formalin-fixed paraffin embedded sections.



Immunohistochemical staining of human Hsp27 in human corpus uteri with rabbit polyclonal antibody at 1:1000 dilution, formalin-fixed paraffin embedded sections.



HSP27 was immunoprecipitated using:
Lane A: 0.5 mg A549 Whole Cell Lysate

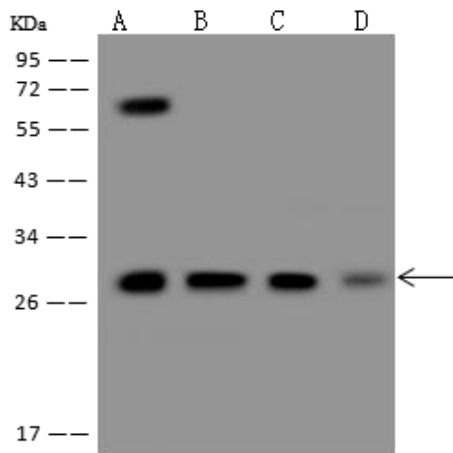
4 μ L anti-HSP27 rabbit polyclonal antibody
and 60 μ g of Immunomagnetic beads Protein
A/G.

Primary antibody:
Anti-HSP27 rabbit polyclonal antibody, at 1:100
dilution

Secondary antibody:
Goat Anti-Rabbit IgG (H+L)/HRP at 1/10000
dilution

Developed using the ECL technique.
Performed under reducing conditions.

Predicted band size: 26 kDa
Observed band size: 26 kDa



Anti-HSP27 rabbit polyclonal antibody at
1:10000 dilution

Lane A: HeLa Whole Cell Lysate
Lane B: A549 Whole Cell Lysate
Lane C: A431 Whole Cell Lysate
Lane D: HepG2 Whole Cell Lysate

Lysates/proteins at 30 μ g per lane.

Secondary
Goat Anti-Rabbit IgG (H+L)/HRP at 1/10000
dilution.

Developed using the ECL technique.
Performed under reducing conditions.

Predicted band size: 27 kDa
Observed band size: 27 kDa
(We are unsure as to the identity of these
extra bands.)