

# Human IL13 Protein (Fc Tag)

Catalog Number: 10369-H01H



Sino Biological  
Biological Solution Specialist

## General Information

### Gene Name Synonym:

ALRH; IL-13; P600

### Protein Construction:

A DNA sequence encoding the mature form of human IL13 (AAK53823.1) (Gly 21-Asn 132) was fused with the Fc region of human IgG1 at the N-terminus.

**Source:** Human

**Expression Host:** HEK293 Cells

## QC Testing

**Purity:** > 98 % as determined by SDS-PAGE

### Bio Activity:

**Measured by its binding ability in a functional ELISA. Immobilized recombinant human IL13RA2 at 8 µg/ml (100 µl/well) can bind IL13 with a linear range of 0.25-8.0 ng/ml .**

### Endotoxin:

< 1.0 EU per µg of the protein as determined by the LAL method

### Stability:

Samples are stable for up to twelve months from date of receipt at -70 °C

**Predicted N terminal:** Glu 20

### Molecular Mass:

The recombinant human Fc/IL13 chimera is a disulfide-linked homodimeric protein. The reduced monomer consists of 349 amino acids and predicts a molecular mass of 39 kDa. The apparent molecular mass of rhIL13/Fc monomer is approximately 50-55 kDa in SDS-PAGE under reducing conditions due to glycosylation.

### Formulation:

Lyophilized from sterile PBS, pH 7.4

Normally 5 % - 8 % trehalose, mannitol and 0.01% Tween80 are added as protectants before lyophilization. Specific concentrations are included in the hardcopy of COA. Please contact us for any concerns or special requirements.

## Usage Guide

### Storage:

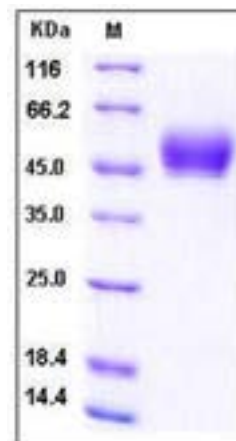
Store it under sterile conditions at -20°C to -80°C upon receiving. Recommend to aliquot the protein into smaller quantities for optimal storage.

**Avoid repeated freeze-thaw cycles.**

### Reconstitution:

Detailed reconstitution instructions are sent along with the products.

## SDS-PAGE:



## Protein Description

Interleukin 13 (IL-13) is a single-chain glycosylated polypeptide, which belongs to the IL-13/IL-4 family. IL-13 protein is secreted by many cell types, but especially by T helper type 2 (Th2) cells. IL-13 exerts its effects through a multi-subunit receptor comprising the alpha chain of the IL-4 receptor (IL-4Rα) and at least one of two known IL-13-specific binding chains (IL-13 Rα1 and IL-13 Rα2). As a cytokine, IL-13 protein is critical in regulating inflammatory, immune responses and diseases. In addition, it inhibits the production of pro-inflammatory cytokines and chemokines, and thus down-regulates macrophage activity. IL-13 protein and antibody is more importantly implicated as a central mediator of immunoregulatory processes in various cell types.

**Manufactured By Sino Biological Inc., FOR RESEARCH USE ONLY. NOT FOR USE IN HUMANS.**

**For US Customer:** Fax: 267-657-0217 • Tel: 215-583-7898

**Global Customer:** Fax :+86-10-5862-8288 • Tel:+86-400-890-9989 • <http://www.sinobiological.com>