

# Human CD32a / FCGR2A Protein (167 His, His & AVI Tag), Biotinylated

Catalog Number: 10374-H27H1-B



Sino Biological  
Biological Solution Specialist

## General Information

### Gene Name Synonym:

CD32; CD32A; CDw32; Fc gamma RIIA; FCG2; FcGR; FCGR2; FCGR2A1; IGFR2

### Protein Construction:

A DNA sequence encoding the extracellular domain (Met 1-Met 210) of human CD32a (P12318-1) was fused with a c-terminal polyhistidine tagged AVI tag at the C-terminus. The expressed protein was biotinylated in vivo by the Biotin-Protein ligase (BirA enzyme) which is co-expressed. It is identical to FCGR2A131H/R in the reference.

**Source:** Human

**Expression Host:** HEK293 Cells

## QC Testing

### Biotin/Protein Ratio:

0.7-1 as determined by the HABA assay.

**Purity:** > 95 % as determined by SDS-PAGE

### Bio Activity:

1. Measured by its binding ability in a functional ELISA. Immobilized human IgG2 at 10 µg/ml (100 µl/well) can bind biotinylated human CD32 with a linear ranger of 0.16-0.8 µg/ml.
2. Using the Octet RED System, the affinity constant (Kd) of CD32a-AVI-His + BirA bound to human IgG was 12nM.
3. Using the Octet RED System, the affinity constant (Kd) of CD32A Protein, Human, Recombinant (His & AVI Tag), Biotinylated(Cat. 10374-H27H1-B) bound to Human IgG1 was 10-7-10-9M.

### Endotoxin:

< 1.0 EU per µg of the protein as determined by the LAL method

### Stability:

Samples are stable for up to twelve months from date of receipt at -70 °C

**Predicted N terminal:** Gln 34

### Molecular Mass:

The recombinant human CD32a consists of 213 amino acids after removal of the signal peptide and predicts a molecular mass of 23.6 KDa. It migrates as an approximately 33 KDa band due to glycosylation by SDS-PAGE under reducing conditions.

### Formulation:

Lyophilized from sterile PBS, pH 7.4

Normally 5 % - 8 % trehalose, mannitol and 0.01% Tween80 are added as protectants before lyophilization. Specific concentrations are included in the hardcopy of COA. Please contact us for any concerns or special requirements.

## Usage Guide

### Storage:

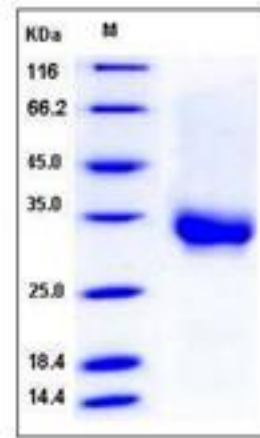
Store it under sterile conditions at -20°C to -80°C upon receiving. Recommend to aliquot the protein into smaller quantities for optimal storage.

**Avoid repeated freeze-thaw cycles.**

### Reconstitution:

Detailed reconstitution instructions are sent along with the products.

### SDS-PAGE:



Manufactured By Sino Biological Inc., FOR RESEARCH USE ONLY. NOT FOR USE IN HUMANS.

For US Customer: Fax: 267-657-0217 ● Tel: 215-583-7898

Global Customer: Fax :+86-10-5862-8288 ● Tel:+86-400-890-9989 ● <http://www.sinobiological.com>