

PD1/PDCD1/CD279 Antibody, Mouse MAb



Sino Biological
Biological Solution Specialist

Catalog Number: 10377-M140

GENERAL INFORMATION

Immunogen:	Recombinant Human PD1/PDCD1/CD279 Protein (Catalog#10377-H08H)
Preparation	This antibody was produced from a hybridoma resulting from the fusion of a mouse myeloma with B cells obtained from a mouse immunized with purified, recombinant Human PD1/PDCD1/CD279 (rh PD1/PDCD1/CD279; Catalog#10377-H08H; NP_005009.2; Met1-Gln167). The IgG fraction of the cell culture supernatant was purified by Protein A affinity chromatography.
Ig Type:	Mouse IgG1
Clone ID:	140
Specificity:	Human PD1/PDCD1/CD279
Formulation:	0.2 µm filtered solution in PBS
Storage:	This antibody can be stored at 2°C-8°C for one month without detectable loss of activity. Antibody products are stable for twelve months from date of receipt when stored at -20°C to -80°C. Preservative-Free. Sodium azide is recommended to avoid contamination (final concentration 0.05%-0.1%). It is toxic to cells and should be disposed of properly. Avoid repeated freeze-thaw cycles.

APPLICATIONS

Applications:	FCM
RECOMMENDED CONCENTRATION	
Flow Cytometry	FCM: 1:25-1:100

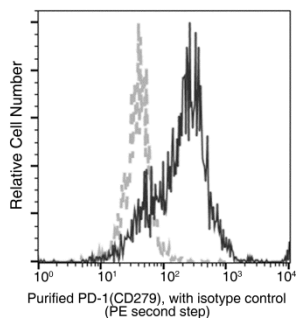
Please Note: Optimal concentrations/dilutions should be determined by the end user.

PD1/PDCD1/CD279 Antibody, Mouse MAb



Sino Biological
Biological Solution Specialist

Catalog Number: 10377-M140



Flow cytometric analysis of Human PD-1 (CD279) expression on PHA-activated human whole blood Lymphocytes. Cells were stained with purified anti-Human PD-1 (CD279), then a PE-conjugated second step antibody. The fluorescence histograms were derived from gated events with the forward and side light-scatter characteristics of viable Lymphocytes.

Flow cytometry was performed on a BD FACSCalibur flow cytometry system. Please refer to www.sinobiological.com/Flow-Cytometry-FACS-Protocols-a-750.html for technical protocols.