

IL-6R Antibody, Rabbit MAb



Sino Biological
Biological Solution Specialist

Catalog Number: 10398-R502

EliteRmab® is a registered trademark of Sino Biological Inc.

GENERAL INFORMATION

Immunogen:	Recombinant Human IL-6R Protein (Catalog#10398-H08H)
Preparation	This antibody was obtained from a rabbit immunized with purified, recombinant Human IL-6R (rh IL-6R; Catalog#10398-H08H; NP_000556.1; Met1-Pro365).
Ig Type:	Rabbit IgG
Clone ID:	502
Specificity:	Human IL-6R
Formulation:	0.2 µm filtered solution in PBS
Storage:	This antibody can be stored at 2°C-8°C for one month without detectable loss of activity. Antibody products are stable for twelve months from date of receipt when stored at -20°C to -80°C. Preservative-Free. Avoid repeated freeze-thaw cycles.
Alternative Names:	CD126,gp80,IL-6R,IL-6R-1,IL-6RA,IL6Q,IL6RA,IL6RQ

APPLICATIONS

Applications:	FCM
----------------------	-----

RECOMMENDED CONCENTRATION

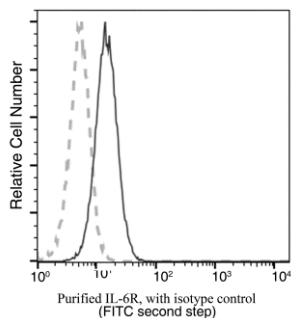
Flow Cytometry	FCM: 1:25-1:100
-----------------------	-----------------

Please Note: Optimal concentrations/dilutions should be determined by the end user.



Catalog Number: 10398-R502

EliteRmab® is a registered trademark of Sino Biological Inc.



Flow cytometric analysis of Human IL-6R expression on U266 cells. Cells were stained with purified anti-Human IL-6R, then a FITC-conjugated second step antibody. The fluorescence histograms were derived from gated events with the forward and side light-scatter characteristics of intact cells.

Flow cytometry was performed on a BD FACSCalibur flow cytometry system. Please refer to www.sinobiological.com/Flow-Cytometry-FACS-Protocols-a-750.html for technical protocols.