

IL-6R Antibody (FITC), Rabbit MAb



Sino Biological
Biological Solution Specialist

Catalog Number: 10398-R502-F

EliteRmab® is a registered trademark of Sino Biological Inc.

GENERAL INFORMATION

Immunogen:	Recombinant Human IL-6R Protein (Catalog#10398-H08H)
Reagents:	FITC-conjugated Rabbit monoclonal antibody
Preparation	This antibody was obtained from a rabbit immunized with purified, recombinant Human IL-6R (rh IL-6R; Catalog#10398-H08H; NP_000556.1; Met1-Pro365) and conjugated with FITC under optimum conditions, the unreacted FITC was removed.
Ig Type:	Rabbit IgG
Clone ID:	502
Specificity:	Human IL-6R
Concentration:	5 µl/Test, 0.1 mg/ml
Formulation:	Aqueous solution containing 0.5% BSA and 0.03%ProClin300
Storage:	This antibody can be stored at 2℃-8℃ for twelve months without detectable loss of activity. Protected from prolonged exposure to light. Do not freeze !
Alternative Names:	CD126,gp80,IL-6R,IL-6R-1,IL-6RA,IL6Q,IL6RA,IL6RQ

APPLICATIONS

Applications:	FCM
----------------------	-----

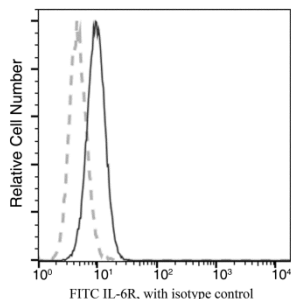
RECOMMENDED CONCENTRATION

Please Note: Optimal concentrations/dilutions should be determined by the end user.



Catalog Number: 10398-R502-F

EliteRmab® is a registered trademark of Sino Biological Inc.



Flow cytometric analysis of Human IL-6R expression on U266 cells. Cells were stained with FITC-conjugated anti-Human IL-6R. The fluorescence histograms were derived from gated events with the forward and side light-scatter characteristics of intact cells.

Flow cytometry was performed on a BD FACSCalibur flow cytometry system. Please refer to www.sinobiological.com/Flow-Cytometry-FACS-Protocols-a-750.html for technical protocols.