

# TRAIL R1 / CD261 / TNFRSF10A Antibody (FITC), Mouse MAb



Sino Biological  
Biological Solution Specialist

Catalog Number: 10408-MM01-F

GENERAL INFORMATION	
Immunogen:	Recombinant Human TRAIL R1 / CD261 / TNFRSF10A protein (Catalog#10408-H08H)
Reagents:	FITC-conjugated Mouse monoclonal antibody
Preparation	This antibody was produced from a hybridoma resulting from the fusion of a mouse myeloma with B cells obtained from a mouse immunized with purified, recombinant Human TRAIL R1 / CD261 / TNFRSF10A (rh TRAIL R1 / CD261 / TNFRSF10A; Catalog#10408-H08H; NP_003835.2; Met1-Asn239) and conjugated with FITC under optimum conditions, the unreacted FITC was removed.
Ig Type:	Mouse IgG1
Clone ID:	01
Specificity:	Human TRAIL R1 / CD261 / TNFRSF10A
Concentration:	10 µl/Test, 0.1 mg/ml
Formulation:	Aqueous solution containing 0.5% BSA and 0.09% sodium azide
Storage:	This antibody can be stored at 2°C-8°C for twelve months without detectable loss of activity. Protected from prolonged exposure to light. Do not freeze ! Sodium azide is toxic to cells and should be disposed of properly. Flush with large volumes of water during disposal.
Alternative Names:	APO2,CD261,DR4,MGC9365,TNFRSF10A,TRAILR-1,TRAILR1
APPLICATIONS	
Applications:	FCM

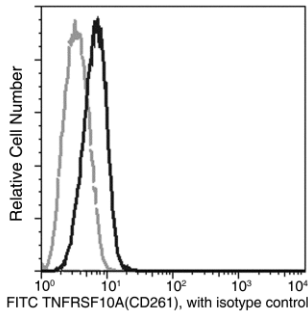
**Please Note: Optimal concentrations/dilutions should be determined by the end user.**

# TRAIL R1 / CD261 / TNFRSF10A Antibody (FITC), Mouse MAb



Sino Biological  
Biological Solution Specialist

Catalog Number: 10408-MM01-F



Flow cytometric analysis of human TNFRSF10A(CD261) expression on HeLa cells. HeLa cells were stained with FITC-conjugated anti-Human TNFRSF10A(CD261). The histogram were derived from gated events with the forward and side light-scatter characteristics of intact cells.

Flow cytometry was performed on a BD FACSCalibur flow cytometry system. Please refer to [www.sinobiological.com/Flow-Cytometry-FACS-Protocols-a-750.html](http://www.sinobiological.com/Flow-Cytometry-FACS-Protocols-a-750.html) for technical protocols.