

ISM1 Antibody, Rabbit PAb, Antigen Affinity Purified



Sino Biological
Biological Solution Specialist

Catalog Number: 104137-T44

GENERAL INFORMATION

Immunogen:	A synthetic peptide corresponding to the C-terminus of the Human ISM1
Preparation	Produced in rabbits immunized with a synthetic peptide corresponding to the C-terminus of the Human ISM1, and purified by antigen affinity chromatography.
Ig Type:	Rabbit IgG
Specificity:	Human, Mouse
	Reacts with Mouse
Formulation:	PBS, pH7.0 with 0.03% Proclin300
Storage:	This antibody can be stored at 2°C-8°C for one month without detectable loss of activity. Antibody products are stable for twelve months from date of receipt when stored at -20°C to -80°C. Avoid repeated freeze-thaw cycles.

APPLICATIONS

Applications:	WB,IHC-P,IP
----------------------	-------------

RECOMMENDED CONCENTRATION

IHC-P	IHC-P: 1:100-1:400
Western Blot	WB: 1:500-1:2000
Immunoprecipitation	IP:0.5-2μL/mg of lysate

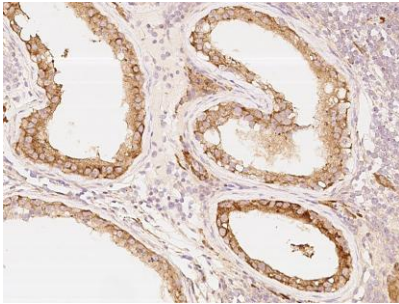
Please Note: Optimal concentrations/dilutions should be determined by the end user.

ISM1 Antibody, Rabbit PAb, Antigen Affinity Purified

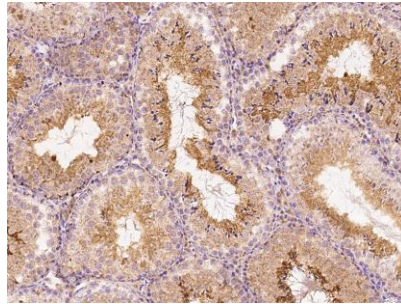


Sino Biological
Biological Solution Specialist

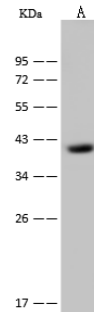
Catalog Number: 104137-T44



Immunohistochemical staining of human ISM1 in human testis with rabbit polyclonal antibody at 1:200 dilution, formalin-fixed paraffin embedded sections.



Immunohistochemical staining of human ISM1 in mouse testis with rabbit polyclonal antibody at 1:200 dilution, formalin-fixed paraffin embedded sections.



Anti-ISM1 rabbit polyclonal antibody at 1:500 dilution

Lane A: Mouse liver tissue lysate

Lysates/proteins at 30 µg per lane.

Secondary

Goat Anti-Rabbit IgG (H+L)/HRP at 1/10000 dilution.

Developed using the ECL technique.
Performed under reducing conditions.

Predicted band size: 52 kDa
Observed band size: 42 kDa



ISM1 was immunoprecipitated using:
Lane A: 0.5 mg Mouse liver Whole Cell Lysate

4 µL anti-ISM1 rabbit polyclonal antibody and
60 µg of Immunomagnetic beads Protein A/G.

Primary antibody:
Anti-ISM1 rabbit polyclonal antibody, at 1:100 dilution

Secondary antibody:
Goat Anti-Rabbit IgG (H+L)/HRP at 1/10000 dilution

Developed using the ECL technique.
Performed under reducing conditions.

Predicted band size: 52 kDa
Observed band size: 40 kDa

Manufactured By Sino Biological Inc., FOR RESEARCH USE ONLY. NOT FOR USE IN HUMANS.

Tel: 215-583-7898 (US); +86-400-890-9989(Global) •

<http://www.sinobiological.com>