

Human MKK6 / MEK6 / MAP2K6 Protein (207 Ser/Asp, 211 Thr/Asp, His & GST Tag)

Catalog Number: 10422-H20B1



Sino Biological
Biological Solution Specialist

General Information

Gene Name Synonym:

MAPKK6; MEK6; MKK6; PRKMK6; SAPKK-3; SAPKK3

Protein Construction:

A DNA sequence encoding the human MAP2K6 isoform 1 (P52564-1) (Met 1-Asp 334, Ser 207/Asp, Thr 211/Asp) was fused with the N-terminal polyhistidine-tagged GST tag at the N-terminus.

Source: Human

Expression Host: Baculovirus-Insect Cells

QC Testing

Purity: > 88 % as determined by SDS-PAGE

Bio Activity:

The specific activity was determined to be >200 nmol/min/mg using inactive MAPK14 as substrate.

Endotoxin:

< 1.0 EU per µg of the protein as determined by the LAL method

Stability:

Samples are stable for up to twelve months from date of receipt at -70 °C

Predicted N terminal: Met

Molecular Mass:

The recombinant human MAP2K6(S207D&T211D) /GST chimera consists of 571 amino acids and has a calculated molecular mass of 65.3 KDa. It migrates as an approximately 60 KDa band in SDS-PAGE under reducing conditions.

Formulation:

Supplied as sterile 20mM Tris, 500mM NaCl, pH 8.0, 10% glycerol

Normally 5 % - 8 % trehalose, mannitol and 0.01% Tween80 are added as protectants before lyophilization. Specific concentrations are included in the hardcopy of COA. Please contact us for any concerns or special requirements.

Usage Guide

Storage:

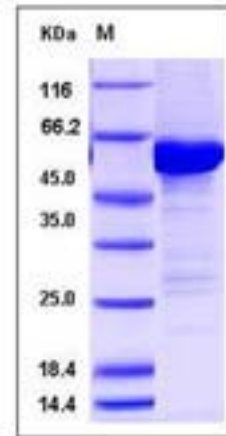
Store it under sterile conditions at -20°C to -80°C upon receiving. Recommend to aliquot the protein into smaller quantities for optimal storage.

Avoid repeated freeze-thaw cycles.

Reconstitution:

Detailed reconstitution instructions are sent along with the products.

SDS-PAGE:



Protein Description

Dual specificity mitogen-activated protein kinase kinase 6, also known as MAP kinase kinase 6, MAPKK 6, MAPK / ERK kinase 6, SAPKK3, MAP2K6 and MKK6, is a protein which belongs to the protein kinase superfamily, STE Ser / Thr protein kinase family and MAP kinase kinase subfamily. MAP2K6 / MKK6 contains one protein kinase domain. Mitogen-activated protein kinases are members of a conserved cascade of kinases involved in many signal transduction pathways. They stimulate phosphorylation of transcription factors in response to extracellular signals such as growth factors, cytokines, ultraviolet light, and stress-inducing agents. MAP2K6 / MKK6 exists in a variety of alternatively spliced isoforms with distinct patterns of tissue expression. Isoform 2 of MAP2K6 / MKK6 is only expressed in skeletal muscle. Isoform 1 of MAP2K6 / MKK6 is expressed in skeletal muscle, heart, and in lesser extent in liver or pancreas.

References

1. Raingeaud J., *et al.*, (1996), MKK3- and MKK6-regulated gene expression is mediated by the p38 mitogen-activated protein kinase signal transduction pathway. *Mol. Cell. Biol.* 16:1247-1255.
2. Stein B., *et al.*, (1996), Cloning and characterization of MEK6, a novel member of the mitogen-activated protein kinase kinase cascade. *J. Biol. Chem.* 271:11427-11433.
3. Han J., *et al.*, (1996), Characterization of the structure and function of a novel MAP kinase kinase (MKK6). *J. Biol. Chem.* 271:2886-2891.

Manufactured By Sino Biological Inc., FOR RESEARCH USE ONLY. NOT FOR USE IN HUMANS.

For US Customer: Fax: 267-657-0217 • Tel: 215-583-7898

Global Customer: Fax :+86-10-5862-8288 • Tel:+86-400-890-9989 • <http://www.sinobiological.com>