

TROP2 / TACSTD2 Antibody, Rabbit MAb



Sino Biological
Biological Solution Specialist

Catalog Number: 10428-R001

EliteRmab® is a registered trademark of Sino Biological Inc.

GENERAL INFORMATION	
Immunogen:	Recombinant Human TROP2 / TACSTD2 protein (Catalog#10428-H08H)
Preparation	This antibody was obtained from a rabbit immunized with purified, recombinant Human TROP2 / TACSTD2 (rh TROP2 / TACSTD2; Catalog#10428-H08H; NP_002344.2; Met 1-Thr 274).
Ig Type:	Rabbit IgG
Clone ID:	001
Specificity:	Human TROP2 / TACSTD2
	Has cross-reactivity in ELISA with Human E-cad Human CD146 Human CD171 Human BCAM Human ICAM1 No cross-reactivity in ELISA with Human VCAM1
Formulation:	0.2 µm filtered solution in PBS
Storage:	This antibody can be stored at 2°C-8°C for one month without detectable loss of activity. Antibody products are stable for twelve months from date of receipt when stored at -20°C to -80°C. Preservative-Free. Avoid repeated freeze-thaw cycles.
Alternative Names:	EGP-1,EGP1,GA733-1,GA7331,GP50,M1S1,TACD2,TROP-2,TROP2
APPLICATIONS	
Applications:	ELISA,FCM,ICC/IF
RECOMMENDED CONCENTRATION	
ICC/IF	ICC/IF: 1:50-1:1000
Flow Cytometry	FCM: 1:25-1:100
ELISA	ELISA: 1:5000-1:10000 This antibody can be used at 1:5000-1:10000 with the appropriate secondary reagents to detect Human TROP2.

Please Note: Optimal concentrations/dilutions should be determined by the end user.

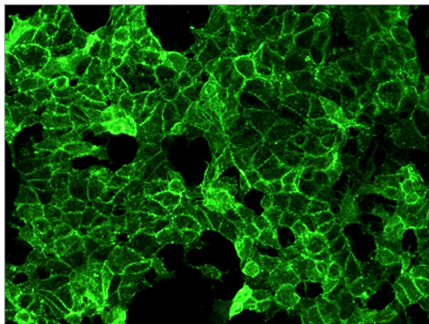
TROP2 / TACSTD2 Antibody, Rabbit MAb

Catalog Number: 10428-R001

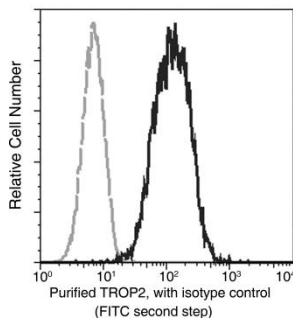


Sino Biological
Biological Solution Specialist

EliteRmab® is a registered trademark of Sino Biological Inc.



Immunofluorescence staining of human TROP2 in MCF-7 cells with rabbit monoclonal antibody (1:200). The image showing membrane staining of MCF-7 cells.



Flow cytometric analysis of human TROP2 expression on MCF-7 cells. Cells were stained with purified anti-Human TROP2, then a FITC-conjugated second step antibody. The histogram were derived from gated events with the forward and side light-scatter characteristics of intact cells.

Flow cytometry was performed on a BD FACSCalibur flow cytometry system. Please refer to www.sinobiological.com/Flow-Cytometry-FACS-Protocols-a-750.html for technical protocols.