

TROP2 / TACSTD2 Antibody (FITC), Rabbit MAb



Sino Biological
Biological Solution Specialist

Catalog Number: 10428-R001-F

EliteRmab® is a registered trademark of Sino Biological Inc.

GENERAL INFORMATION

Immunogen:	Recombinant Human TROP2 / TACSTD2 protein (Catalog#10428-H08H)
Reagents:	FITC-conjugated Rabbit monoclonal antibody
Preparation	This antibody was obtained from a rabbit immunized with purified, recombinant Human TROP2 / TACSTD2 (rh TROP2 / TACSTD2; Catalog#10428-H08H; NP_002344.2; Met1-Thr274) and conjugated with FITC under optimum conditions, the unreacted FITC was removed.
Ig Type:	Rabbit IgG
Clone ID:	001
Specificity:	Human TROP2 / TACSTD2
Concentration:	10 µl/Test, 0.1 mg/ml
Formulation:	PBS solution containing 0.5% BSA and 0.09% sodium azide
Storage:	This antibody can be stored at 2°C-8°C for twelve months without detectable loss of activity. Protected from prolonged exposure to light. Do not freeze ! Sodium azide is toxic to cells and should be disposed of properly. Flush with large volumes of water during disposal.
Alternative Names:	TACSTD2

APPLICATIONS

Applications:	FCM
----------------------	-----

Please Note: Optimal concentrations/dilutions should be determined by the end user.

For Research Use Only. Not for use in diagnostic or therapeutic procedures.

Tel: +86-400-890-9989 (Global), +1-215-583-7898 (USA), +49(0)6196 9678656 (Europe)

Website: <http://www.sinobiological.com>

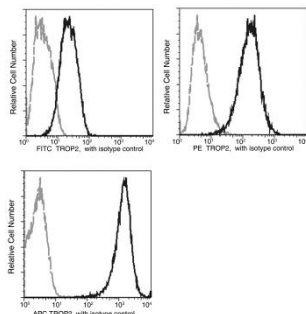
TROP2 / TACSTD2 Antibody (FITC), Rabbit MAb

Catalog Number: 10428-R001-F



Sino Biological
Biological Solution Specialist

EliteRmab® is a registered trademark of Sino Biological Inc.



Flow cytometric analysis of anti-Human
TROP2 on MCF-7 cells.

Flow cytometry was performed on a BD
FACSCalibur flow cytometry system.
Please refer to www.sinobiological.com/Flow-Cytometry-FACS-Protocols-a-750.html for
technical protocols.

For Research Use Only. Not for use in diagnostic or therapeutic procedures.

Tel: +86-400-890-9989 (Global), +1-215-583-7898 (USA), +49(0)6196 9678656 (Europe)

Website: <http://www.sinobiological.com>