

# MTHFD1L Antibody, Rabbit PAb, Antigen Affinity Purified



Sino Biological  
Biological Solution Specialist

Catalog Number: 104328-T32

## GENERAL INFORMATION

|                     |   |
|---------------------|---|
| <b>Immunogen:</b>   | A synthetic peptide corresponding to the center region of the Human MTHFD1L   |
| <b>Preparation</b>  | Produced in rabbits immunized with a synthetic peptide corresponding to the center region of the Human MTHFD1L, and purified by antigen affinity chromatography.  |
| <b>Ig Type:</b>     | Rabbit IgG  |
| <b>Specificity:</b> | Human MTHFD1L   |
| <b>Formulation:</b> | PBS, pH7.0 with 0.03% Proclin300  |
| <b>Storage:</b>     | This antibody can be stored at 2°C-8°C for one month without detectable loss of activity. Antibody products are stable for twelve months from date of receipt when stored at -20°C to -80°C. Avoid repeated freeze-thaw cycles. |

## APPLICATIONS

|                      |    |
|----------------------|----|
| <b>Applications:</b> | WB |
|----------------------|----|

## RECOMMENDED CONCENTRATION

|                     |                  |
|---------------------|------------------|
| <b>Western Blot</b> | WB: 1:500-1:2000 |
|---------------------|------------------|

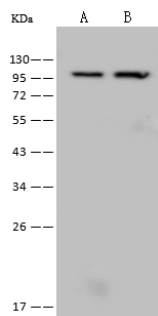
**Please Note:** Optimal concentrations/dilutions should be determined by the end user.

# MTHFD1L Antibody, Rabbit PAb, Antigen Affinity Purified



Sino Biological  
Biological Solution Specialist

Catalog Number: 104328-T32



Anti-MTHFD1L rabbit polyclonal antibody at  
1:500 dilution

Lane A: Hela Whole Cell Lysate

Lane B: NIH-3T3 Whole Cell Lysate

Lysates/proteins at 30 µg per lane.

Secondary

Goat Anti-Rabbit IgG (H+L)/HRP at 1/10000  
dilution.

Developed using the ECL technique.

Performed under reducing conditions.

Predicted band size: 106 kDa