

# HGF Antibody, Rabbit PAb, Antigen Affinity Purified



Sino Biological  
Biological Solution Specialist

Catalog Number: 10463-T26

GENERAL INFORMATION	
Immunogen:	Recombinant Human HGF Protein (Catalog#10463-HNAS)
Preparation	Produced in rabbits immunized with purified, recombinant Human HGF (rh HGF; Catalog#10463-HNAS; NP_000592.3; Met1-Ser728). HGF specific IgG was purified by Human HGF affinity chromatography.
Ig Type:	Rabbit IgG
Specificity:	Human HGF
Formulation:	0.2 µm filtered solution in PBS
Storage:	This antibody can be stored at 2°C-8°C for one month without detectable loss of activity. Antibody products are stable for twelve months from date of receipt when stored at -20°C to -80°C. Preservative-Free. Avoid repeated freeze-thaw cycles.
Alternative Names:	DFNB39,F-TCF,F-TCFB,Hepatocyte Growth Factor,HGFB,HPTA,SF
APPLICATIONS	
Applications:	ELISA,IHC-P,ICC/IF
RECOMMENDED CONCENTRATION	
IHC-P	IHC-P: 1:100-1:500
ICC/IF	ICC/IF: 1:100-1:500
ELISA	ELISA: 1:5000-1:10000 This antibody can be used at 1:5000-1:10000 with the appropriate secondary reagents to detect Human HGF.

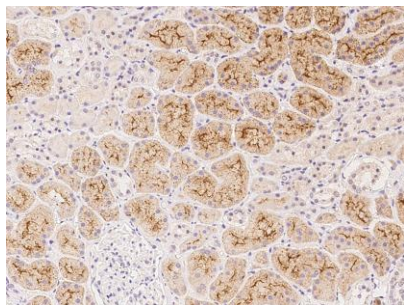
**Please Note: Optimal concentrations/dilutions should be determined by the end user.**

# HGF Antibody, Rabbit PAb, Antigen Affinity Purified

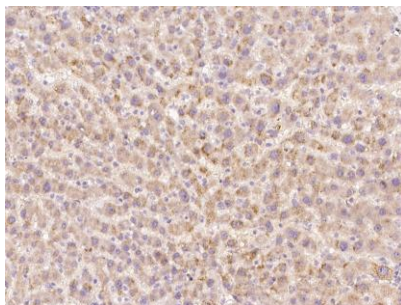
Catalog Number: 10463-T26



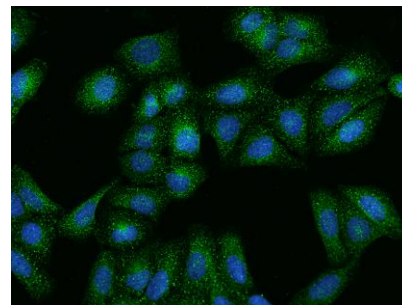
Sino Biological  
Biological Solution Specialist



Immunohistochemical staining of human HGF in human kidney with rabbit polyclonal antibody at 1:200 dilution, formalin-fixed paraffin embedded sections.



Immunohistochemical staining of human HGF in human liver with rabbit polyclonal antibody at 1:200 dilution, formalin-fixed paraffin embedded sections.



Immunofluorescence staining of HGF in U2OS cells. Cells were fixed with 4% PFA, permeabilized with 0.1% Triton X-100 in PBS, blocked with 10% serum, and incubated with rabbit anti-Human HGF polyclonal antibody (dilution ratio 1:200) at 4°C overnight. Then cells were stained with the Alexa Fluor 488-conjugated Goat Anti-rabbit IgG secondary antibody (green) and counterstained with DAPI (blue). Positive staining was localized to Cytoplasm.