

Human CCL18 / PARC / MIP4 Protein (His Tag)

Catalog Number: 10502-H08Y



Sino Biological
Biological Solution Specialist

General Information

Gene Name Synonym:

AMAC-1; AMAC1; CCL18; CKb7; DC-CK1; DCCCK1; MIP-4; MIP4; PARC; SCYA18

Protein Construction:

A DNA sequence encoding human CCL18 (NP_002979.1) (Ala21-Ala89) was expressed with a polyhistidine tag at the C-terminus.

Source: Human

Expression Host: Yeast

QC Testing

Purity: > 95 % as determined by SDS-PAGE

Endotoxin:

Please contact us for more information.

Stability:

Samples are stable for up to twelve months from date of receipt at -70 °C

Predicted N terminal: Ala 21

Molecular Mass:

The recombinant human CCL18 consists of 79 amino acids and predicts a molecular mass of 9.2 KDa. It migrates as an approximately 9 KDa band in SDS-PAGE under reducing conditions.

Formulation:

Lyophilized from sterile PBS, pH 7.4.

Normally 5 % - 8 % trehalose, mannitol and 0.01% Tween80 are added as protectants before lyophilization. Specific concentrations are included in the hardcopy of COA. Please contact us for any concerns or special requirements.

Usage Guide

Storage:

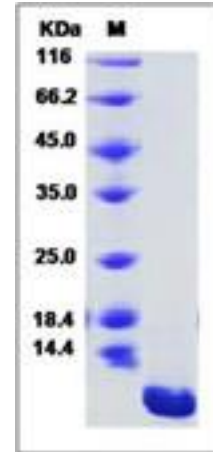
Store it under sterile conditions at -20°C to -80°C upon receiving. Recommend to aliquot the protein into smaller quantities for optimal storage.

Avoid repeated freeze-thaw cycles.

Reconstitution:

Detailed reconstitution instructions are sent along with the products.

SDS-PAGE:



Manufactured By Sino Biological Inc., FOR RESEARCH USE ONLY. NOT FOR USE IN HUMANS.

For US Customer: Fax: 267-657-0217 • Tel: 215-583-7898

Global Customer: Fax :+86-10-5862-8288 • Tel:+86-400-890-9989 • <http://www.sinobiological.com>