

Human CD208 / LAMP3 / DC-LAMP Protein (His Tag)

Catalog Number: 10527-H08H



Sino Biological
Biological Solution Specialist

General Information

Gene Name Synonym:

CD208; DC LAMP; DC-LAMP; DCLAMP; LAMP; LAMP-3; TSC403

Protein Construction:

A DNA sequence encoding the mature form of human LAMP3 (NP_055213.2) (Lys 28-Thr 381) with a carboxy-terminal polyhistidine tag was expressed.

Source: Human

Expression Host: HEK293 Cells

QC Testing

Purity: > 95 % as determined by SDS-PAGE

Endotoxin:

< 1.0 EU per µg of the protein as determined by the LAL method

Stability:

Samples are stable for up to twelve months from date of receipt at -70 °C

Predicted N terminal: Lys 28

Molecular Mass:

The secreted recombinant human LAMP3 consists of 365 amino acids with the predicted molecular mass of 39 kDa. As a result of glycosylation, rh LAMP3 migrates as an approximately 70-90 kDa band in SDS-PAGE under reducing conditions.

Formulation:

Lyophilized from sterile PBS, pH 7.4

Normally 5 % - 8 % trehalose, mannitol and 0.01% Tween80 are added as protectants before lyophilization. Specific concentrations are included in the hardcopy of COA. Please contact us for any concerns or special requirements.

Usage Guide

Storage:

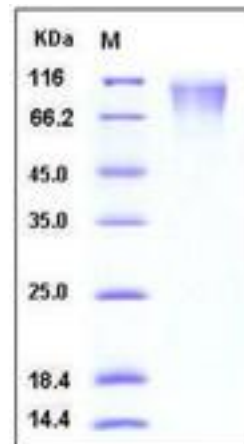
Store it under sterile conditions at -20°C to -80°C upon receiving. Recommend to aliquot the protein into smaller quantities for optimal storage.

Avoid repeated freeze-thaw cycles.

Reconstitution:

Detailed reconstitution instructions are sent along with the products.

SDS-PAGE:



Protein Description

Dendritic cell-lysosomal associated membrane protein (DC-LAMP)/CD208, also known as LAMP3, is a member of the lysosomal associated membrane protein (LAMP) family, which is specifically expressed by human dendritic cells (DCs) upon activation and therefore serves as marker of human DC maturation. Confocal and immunoelectron microscopy showed that mouse DC-LAMP protein co-localizes with Ibm180, a specific marker for the limiting membrane of lamellar bodies that contain surfactant protein B. The present study demonstrates that DC-LAMP is constitutively expressed by mouse, sheep, and human type II pneumocytes. DC-LAMP is constitutively expressed in normal type II pneumocytes. DC-LAMP is detected first in activated human DC within MHC class II molecules-containing compartments just before the translocation of MHC class II-peptide complexes to the cell surface, suggesting a possible involvement in this process. Furthermore, overexpression of LAMP3 is actively involved in tumor invasion through increased migration into lymphovascular spaces.

References

- 1.Salaun B, *et al.* (2003) Cloning and characterization of the mouse homologue of the human dendritic cell maturation marker CD208/DC-LAMP. *Eur J Immunol.* 33(9): 2619-29.
- 2.Salaun B, *et al.* (2004) CD208/dendritic cell-lysosomal associated membrane protein is a marker of normal and transformed type II pneumocytes. *Am J Pathol.* 164(3): 861-71.
- 3.Ishigami S, *et al.* (2010) Prognostic value of CD208-positive cell infiltration in gastric cancer. *Cancer Immunol Immunother.* 59(3): 389-95.

Manufactured By Sino Biological Inc., FOR RESEARCH USE ONLY. NOT FOR USE IN HUMANS.

For US Customer: Fax: 267-657-0217 • Tel: 215-583-7898

Global Customer: Fax :+86-10-5862-8288 • Tel:+86-400-890-9989 • <http://www.sinobiological.com>