

HSD17B11 Antibody, Rabbit PAb, Antigen Affinity Purified



Sino Biological
Biological Solution Specialist

Catalog Number: 105282-T32

GENERAL INFORMATION

Immunogen:	A synthetic peptide corresponding to the center region of the Human HSD17B11
Preparation	Produced in rabbits immunized with a synthetic peptide corresponding to the center region of the Human HSD17B11, and purified by antigen affinity chromatography.
Ig Type:	Rabbit IgG
Specificity:	Human HSD17B11
Formulation:	0.2 µm filtered solution in PBS
Storage:	This antibody can be stored at 2°C-8°C for one month without detectable loss of activity. Antibody products are stable for twelve months from date of receipt when stored at -20°C to -80°C. Preservative-Free. Sodium azide is recommended to avoid contamination (final concentration 0.05%-0.1%). It is toxic to cells and should be disposed of properly. Avoid repeated freeze-thaw cycles.

APPLICATIONS

Applications:	WB
----------------------	----

RECOMMENDED CONCENTRATION

Western Blot	WB: 1:500-1:2000
---------------------	------------------

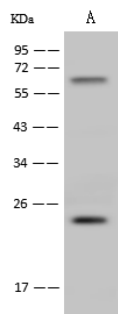
Please Note: Optimal concentrations/dilutions should be determined by the end user.

HSD17B11 Antibody, Rabbit PAb, Antigen Affinity Purified



Sino Biological
Biological Solution Specialist

Catalog Number: 105282-T32



Anti-HSD17B11 rabbit polyclonal antibody at
1:500 dilution

Lane A: RAW264.7 Whole Cell Lysate

Lysates/proteins at 30 µg per lane.

Secondary

Goat Anti-Rabbit IgG (H+L)/HRP at 1/10000
dilution.

Developed using the ECL technique.

Performed under reducing conditions.

Predicted band size: 23 kDa

Observed band size: 23 kDa