

**LysRS/Lysyl tRNA synthetase/KARS**  
**Antibody, Rabbit PAb, Antigen**  
**Affinity Purified**

Catalog Number: 105296-T42



Sino Biological  
Biological Solution Specialist

**GENERAL INFORMATION**

<b>Immunogen:</b>	A synthetic peptide corresponding to the N-terminus of the Human LysRS/Lysyl tRNA synthetase/KARS
<b>Preparation</b>	Produced in rabbits immunized with a synthetic peptide corresponding to the N-terminus of the Human LysRS/Lysyl tRNA synthetase/KARS, and purified by antigen affinity chromatography.
<b>Ig Type:</b>	Rabbit IgG
<b>Specificity:</b>	Human LysRS/Lysyl tRNA synthetase/KARS
<b>Formulation:</b>	0.2 µm filtered solution in PBS
<b>Storage:</b>	This antibody can be stored at 2°C-8°C for one month without detectable loss of activity. Antibody products are stable for twelve months from date of receipt when stored at -20°C to -80°C. Preservative-Free. Avoid repeated freeze-thaw cycles.
<b>Alternative Names:</b>	CMTRIB,DFNB89,KARS1,KARS2,KRS

**APPLICATIONS**

<b>Applications:</b>	WB,IHC-P,ICC/IF
----------------------	-----------------

**RECOMMENDED CONCENTRATION**

<b>IHC-P</b>	IHC-P: 1:500-1:2000
<b>ICC/IF</b>	ICC/IF: 1:300-1:10000
<b>Western Blot</b>	WB: 1:500-1:2000

*Please Note: Optimal concentrations/dilutions should be determined by the end user.*

# LysRS/Lysyl tRNA synthetase/KARS Antibody, Rabbit PAb, Antigen Affinity Purified

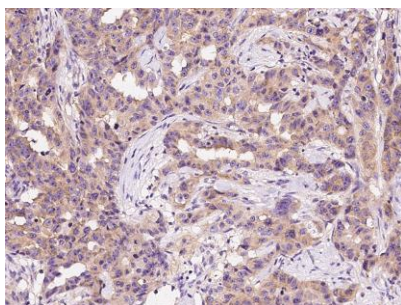
Catalog Number: 105296-T42



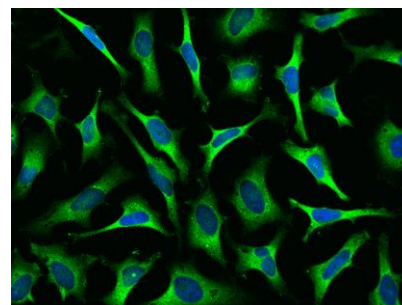
Sino Biological  
Biological Solution Specialist



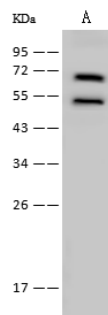
Immunohistochemical staining of human KARS in human colon with rabbit polyclonal antibody at 1:1000 dilution, formalin-fixed paraffin embedded sections.



Immunohistochemical staining of human KARS in human breast carcinoma with rabbit polyclonal antibody at 1:1000 dilution, formalin-fixed paraffin embedded sections.



Immunofluorescence staining of KARS in HeLa cells. Cells were fixed with 4% PFA, permeabilized with 0.1% Triton X-100 in PBS, blocked with 10% serum, and incubated with rabbit anti-Human KARS polyclonal antibody (dilution ratio 1:1000) at 4°C overnight. Then cells were stained with the Alexa Fluor®488-conjugated Goat Anti-rabbit IgG secondary antibody (green) and counterstained with DAPI (blue). Positive staining was localized to cytoplasm.



Anti-KARS rabbit polyclonal antibody at 1:500 dilution

Lane A: H1299 Whole Cell Lysate

Lysates/proteins at 30 µg per lane.

Secondary

Goat Anti-Rabbit IgG (H+L)/HRP at 1/10000 dilution.

Developed using the ECL technique. Performed under reducing conditions.

Predicted band size: 68 kDa

Observed band size: 68 kDa

Manufactured By Sino Biological Inc., FOR RESEARCH USE ONLY. NOT FOR USE IN HUMANS.

Tel: 215-583-7898 (US); +86-400-890-9989(Global) •

<http://www.sinobiological.com>