

# LCP1 Antibody, Rabbit PAb, Antigen Affinity Purified



Sino Biological  
Biological Solution Specialist

Catalog Number: 105300-T38

## GENERAL INFORMATION

<b>Immunogen:</b>	A synthetic peptide corresponding to the center region of the Human LCP1
<b>Preparation</b>	Produced in rabbits immunized with a synthetic peptide corresponding to the center region of the Human LCP1, and purified by antigen affinity chromatography.
<b>Ig Type:</b>	Rabbit IgG
<b>Specificity:</b>	Human LCP1
<b>Formulation:</b>	0.2 µm filtered solution in PBS
<b>Storage:</b>	This antibody can be stored at 2°C-8°C for one month without detectable loss of activity. Antibody products are stable for twelve months from date of receipt when stored at -20°C to -80°C. Preservative-Free. Avoid repeated freeze-thaw cycles.
<b>Alternative Names:</b>	CP64,HEL-S-37,L-PLASTIN,LC64P,LPL,PLS2

## APPLICATIONS

<b>Applications:</b>	WB,ICC/IF,IP
----------------------	--------------

## RECOMMENDED CONCENTRATION

<b>ICC/IF</b>	ICC/IF: 1:300-1:10000
<b>Western Blot</b>	WB: 1:500-1:2000
<b>Immunoprecipitation</b>	IP:5-10 µL/mg of lysate

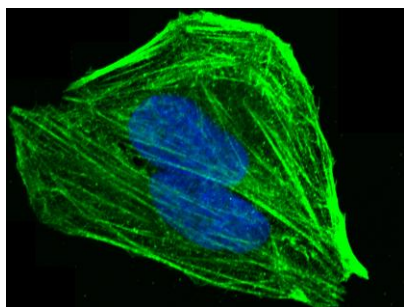
**Please Note:** Optimal concentrations/dilutions should be determined by the end user.

# LCP1 Antibody, Rabbit PAb, Antigen Affinity Purified

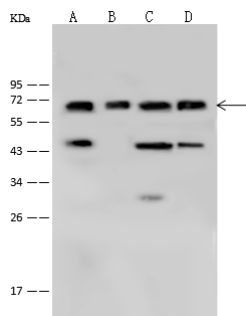
Catalog Number: 105300-T38



Sino Biological  
Biological Solution Specialist



Immunofluorescence staining of LCP1 in U2OS cells. Cells were fixed with 4% PFA, permeabilized with 0.1% Triton X-100 in PBS, blocked with 10% serum, and incubated with rabbit anti-Human LCP1 polyclonal antibody (dilution ratio 1:1000) at 4°C overnight. Then cells were stained with the Alexa Fluor®488-conjugated Goat Anti-rabbit IgG secondary antibody (green) and counterstained with DAPI (blue). Positive staining was localized to Cytoplasm.



Anti-LCP1 rabbit polyclonal antibody at 1:500 dilution

Lane A: THP1 Whole Cell Lysate

Lane B: K562 Whole Cell Lysate

Lane C: Jurkat Whole Cell Lysate

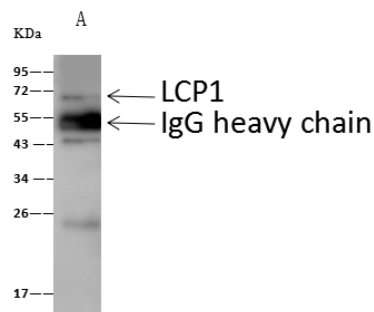
Lane D: Daudi Whole Cell Lysate

Lysates/proteins at 30 µg per lane.

Secondary  
Goat Anti-Rabbit IgG (H+L)/HRP at 1/10000 dilution.

Developed using the ECL technique. Performed under reducing conditions.

Predicted band size: 70 kDa  
Observed band size: 70 kDa



Nkx1-2 was immunoprecipitated using:  
Lane A: 0.5 mg mouse lung tissue lysate

4 µL anti-Nkx1-2 rabbit polyclonal antibody and 60 µg of Immunomagnetic beads Protein A/G.

Primary antibody:

Anti-Nkx1-2 rabbit polyclonal antibody, at 1:100 dilution

Secondary antibody:  
Goat Anti-Rabbit IgG (H+L)/HRP at 1/10000 dilution

Developed using the ECL technique. Performed under reducing conditions.

Predicted band size: 32 kDa  
Observed band size: 30 kDa