

BTN3A1 Antibody, Rabbit PAb, Antigen Affinity Purified



Sino Biological
Biological Solution Specialist

Catalog Number: 105314-T08

GENERAL INFORMATION

| | |
|--------------|--|
| Immunogen: | A synthetic peptide corresponding to the center region of the Human BTN3A1 |
| Preparation | Produced in rabbits immunized with a synthetic peptide corresponding to the center region of the Human BTN3A1, and purified by antigen affinity chromatography. |
| Ig Type: | Rabbit IgG |
| Specificity: | Human BTN3A1 |
| Formulation: | 0.2 µm filtered solution in PBS |
| Storage: | This antibody can be stored at 2°C-8°C for one month without detectable loss of activity. Antibody products are stable for twelve months from date of receipt when stored at -20°C to -80°C. Preservative-Free. Avoid repeated freeze-thaw cycles. |

APPLICATIONS

| | |
|---------------|-------|
| Applications: | IHC-P |
|---------------|-------|

RECOMMENDED CONCENTRATION

| | |
|-------|-------------------|
| IHC-P | IHC-P: 1:50-1:200 |
|-------|-------------------|

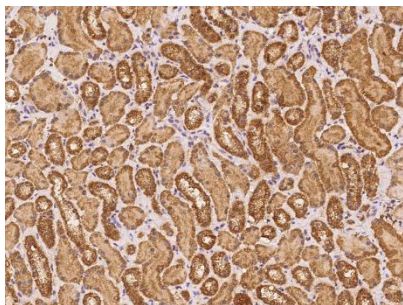
Please Note: Optimal concentrations/dilutions should be determined by the end user.

BTN3A1 Antibody, Rabbit PAb, Antigen Affinity Purified



Sino Biological
Biological Solution Specialist

Catalog Number: 105314-T08



Immunohistochemical staining of human BTN3A1
in human kidney with rabbit polyclonal
antibody at 1:100 dilution, formalin-fixed
paraffin embedded sections.