

# Human DC-SIGNR / CD299 Protein (ECD)



Sino Biological  
Biological Solution Specialist

Catalog Number: 10559-HNCH

## General Information

### Gene Name Synonym:

CD209L; CD299; CLEC4M; DC-SIGN2; DC-SIGNR; DCSIGNR; HP10347; L-SIGN; LSIGN; MGC129964; MGC47866

### Protein Construction:

A DNA sequence encoding the human CLEC4M (NP\_055072.3) (Ser78-Glu399) was expressed.

**Source:** Human

**Expression Host:** HEK293 Cells

## QC Testing

**Purity:** > (50.1+31.8) % as determined by SDS-PAGE.

### Endotoxin:

< 1.0 EU per µg protein as determined by the LAL method.

### Stability:

Samples are stable for up to twelve months from date of receipt at -70 °C

**Predicted N terminal:** Ser 78

### Molecular Mass:

The recombinant human CLEC4M consists 322 amino acids and predicts a molecular mass of 37 kDa.

### Formulation:

Lyophilized from sterile PBS, pH 7.4.

Normally 5 % - 8 % trehalose, mannitol and 0.01% Tween80 are added as protectants before lyophilization. Specific concentrations are included in the hardcopy of COA. Please contact us for any concerns or special requirements.

## Usage Guide

### Storage:

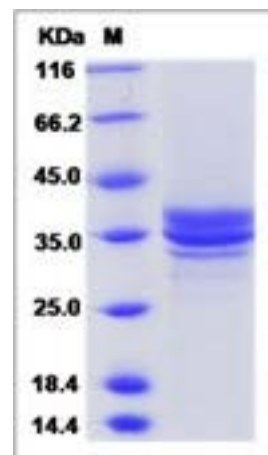
Store it under sterile conditions at -20°C to -80°C upon receiving. Recommend to aliquot the protein into smaller quantities for optimal storage.

**Avoid repeated freeze-thaw cycles.**

### Reconstitution:

Detailed reconstitution instructions are sent along with the products.

## SDS-PAGE:



## Protein Description

C-type lectin domain family 4, member M, also known as DC-SIGNR and CLEC4M, is a type II integral membrane protein that is 77% amino acid identical to DC-SIGN, an HIV gp120-binding protein. Though the encoded gene located in the same chromosome, DC-SIGN is expressed solely on dendritic cells, while DC-SIGNR is predominantly found in liver sinusoidal endothelial cells and lymph node, as well as placental endothelium. DC-SIGNR exists as a homotetramer, and the tandem repeat domain, also called neck domain, mediates oligomerization. DC-SIGNR is regarded as a pathogen-recognition receptor involved in peripheral immune surveillance in liver, and probably mediate the endocytosis of pathogens which are subsequently degraded in lysosomal compartments. DC-SIGNR appears to selectively recognize and bind many viral surface glycoproteins containing high mannose N-linked oligosaccharides in a calcium-dependent manner, including HIV-1 gp120, HIV-2 gp120, SIV gp120, ebolavirus glycoproteins, HCV E2, and human SARS coronavirus protein S, as well as the cellular adhesion protein ICAM3. DC-SIGNR have been thought to play an important role in establishing HIV infection by enhancing trans-infection of CD4(+)T cells in the regional lymph nodes. It may affect susceptibility to HIV infection by a mechanism that is different in females and males. DC-SIGNR can bind to hepatitis C virus (HCV), and its polymorphism might affect HCV loads supporting the concept that DC-SIGNR contributes to HCV replication efficacy.

**Manufactured By Sino Biological Inc., FOR RESEARCH USE ONLY. NOT FOR USE IN HUMANS.**

**For US Customer:** Fax: 267-657-0217 • Tel: 215-583-7898

**Global Customer:** Fax :+86-10-5862-8288 • Tel:+86-400-890-9989 • <http://www.sinobiological.com>