

VPS26A Antibody, Rabbit PAb, Antigen Affinity Purified



Sino Biological
Biological Solution Specialist

Catalog Number: 105616-T32

GENERAL INFORMATION

| | |
|--------------|---|
| Immunogen: | A synthetic peptide corresponding to the C-terminus of the Human VPS26A |
| Preparation | Produced in rabbits immunized with a synthetic peptide corresponding to the C-terminus of the Human VPS26A, and purified by antigen affinity chromatography. |
| Ig Type: | Rabbit IgG |
| Specificity: | Human VPS26A |
| Formulation: | 0.2 µm filtered solution in PBS |
| Storage: | This antibody can be stored at 2°C-8°C for one month without detectable loss of activity. Antibody products are stable for twelve months from date of receipt when stored at -20°C to -80°C. Preservative-Free. Sodium azide is recommended to avoid contamination (final concentration 0.05%-0.1%). It is toxic to cells and should be disposed of properly. Avoid repeated freeze-thaw cycles. |

APPLICATIONS

| | |
|---------------|----|
| Applications: | WB |
|---------------|----|

RECOMMENDED CONCENTRATION

| | |
|--------------|------------------|
| Western Blot | WB: 1:500-1:2000 |
|--------------|------------------|

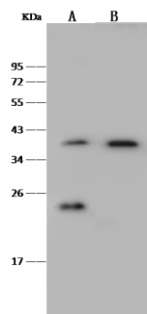
Please Note: Optimal concentrations/dilutions should be determined by the end user.

VPS26A Antibody, Rabbit PAb, Antigen Affinity Purified



Sino Biological
Biological Solution Specialist

Catalog Number: 105616-T32



Anti-VPS26A rabbit polyclonal antibody at
1:500 dilution

Lane A: Jurkat Whole Cell Lysate

Lane B: HepG2 Whole Cell Lysate

Lysates/proteins at 30 µg per lane.

Secondary

Goat Anti-Rabbit IgG (H+L)/HRP at 1/10000
dilution.

Developed using the ECL technique.

Performed under reducing conditions.

Predicted band size: 40 kDa

Observed band size: 40 kDa