

ABLIM1 Antibody, Rabbit PAb, Antigen Affinity Purified



Sino Biological
Biological Solution Specialist

Catalog Number: 105631-T32

GENERAL INFORMATION

Immunogen:	A synthetic peptide corresponding to the center region of the Human ABLIM1
Preparation	Produced in rabbits immunized with a synthetic peptide corresponding to the center region of the Human ABLIM1, and purified by antigen affinity chromatography.
Ig Type:	Rabbit IgG
Specificity:	Human ABLIM1
Formulation:	0.2 µm filtered solution in PBS
Storage:	This antibody can be stored at 2°C-8°C for one month without detectable loss of activity. Antibody products are stable for twelve months from date of receipt when stored at -20°C to -80°C. Preservative-Free. Sodium azide is recommended to avoid contamination (final concentration 0.05%-0.1%). It is toxic to cells and should be disposed of properly. Avoid repeated freeze-thaw cycles.

APPLICATIONS

Applications:	WB
----------------------	----

RECOMMENDED CONCENTRATION

Western Blot	WB: 1:500-1:1000
---------------------	------------------

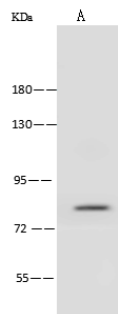
Please Note: Optimal concentrations/dilutions should be determined by the end user.

ABLIM1 Antibody, Rabbit PAb, Antigen Affinity Purified



Sino Biological
Biological Solution Specialist

Catalog Number: 105631-T32



Anti-ABLIM1 rabbit polyclonal antibody at
1:500 dilution
Lane A: HeLa Whole Cell Lysate

Lysates/proteins at 30 µg per lane.
Secondary
Goat Anti-Rabbit IgG (H+L)/HRP at 1/10000
dilution.

Developed using the ECL technique.
Performed under reducing conditions.

Predicted band size:88 kDa
Observed band size:88 kDa